

List of pages in this Trip Kit

Trip Kit Index

Airport Information For UUYU

Terminal Charts For UUYU

Revision Letter For Cycle 06-2012

Change Notices

Notebook

General Information

Location: Syktyvkar Rus
IATA Code: SCW
Lat/Long: N61° 38.8' E050° 50.7'
Elevation: 339 ft

Airport Use: Public
Magnetic Variation: 16.9°E

Fuel Types: Jet A-1
Repair Types: Minor Airframe, Minor Engine
Customs: Yes
Airport Type: IFR
Landing Fee: Yes
Control Tower: Yes
Jet Start Unit: No
LLWS Alert: No
Beacon: No

Sunrise: 0214 Z
Sunset: 1510 Z,

Runway Information

Runway: 01
Length x Width: 8202 ft x 164 ft
Surface Type: asphalt
TDZ-Elev: 332 ft
Lighting: Edge, ALS

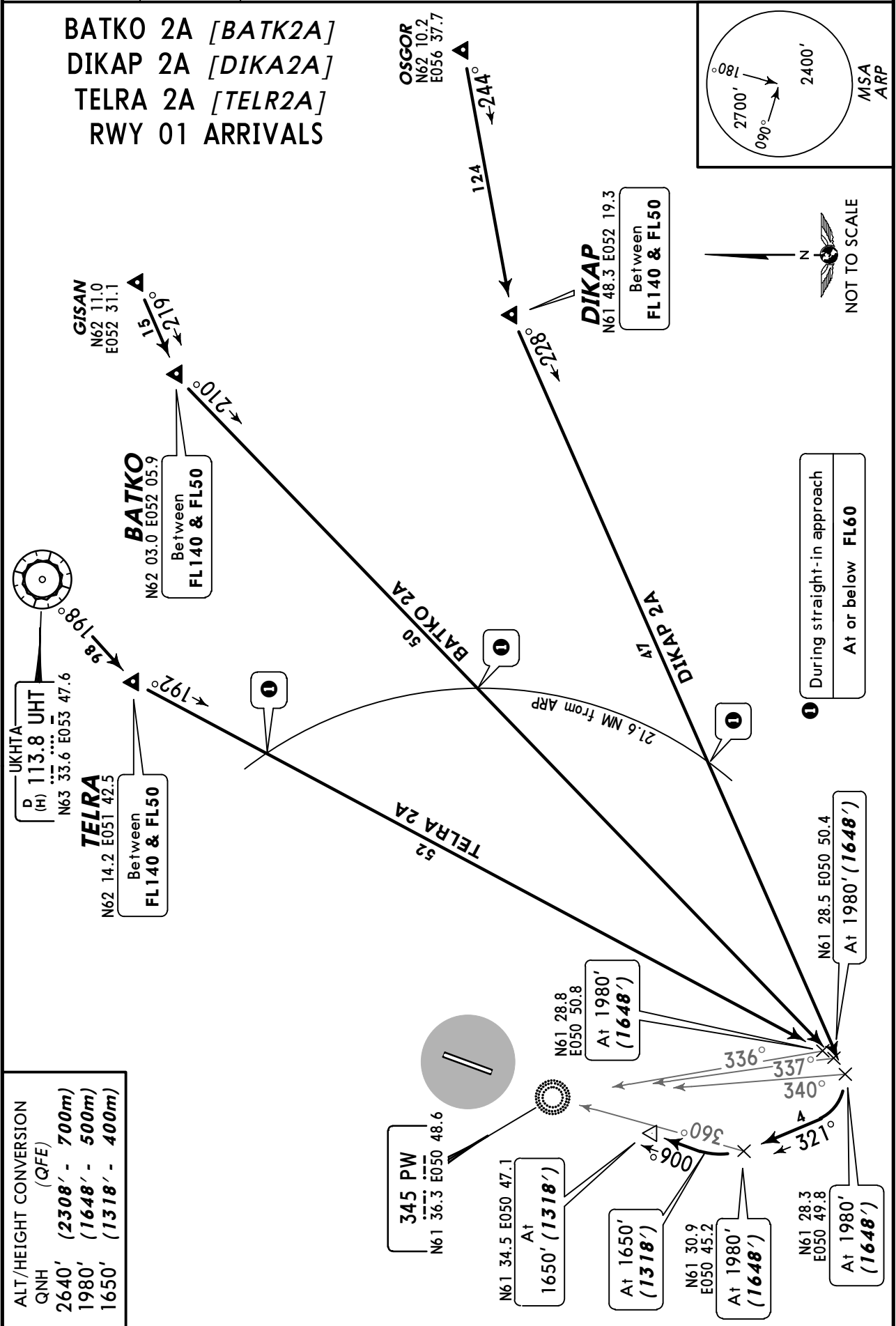
Runway: 19
Length x Width: 8202 ft x 164 ft
Surface Type: asphalt
TDZ-Elev: 310 ft
Lighting: Edge, ALS

Communication Information

ATIS 126.6 Non-English
Sivkar Krug/Start Tower 124.6
Sivkar Transit Operations 131.6

ATIS 126.6	Apt Elev 339'	Alt Set: MM (hPa on request) QNH on request (QFE) Trans level: FL40 FL50 if pressure is less than 760mm (1013.3 hPa) and 733mm (977.3 hPa) or above FL60 if pressure is less than 733mm (977.3 hPa) and 706mm (941.3 hPa) or above Trans alt: 2640' (2308')
---------------	------------------	---

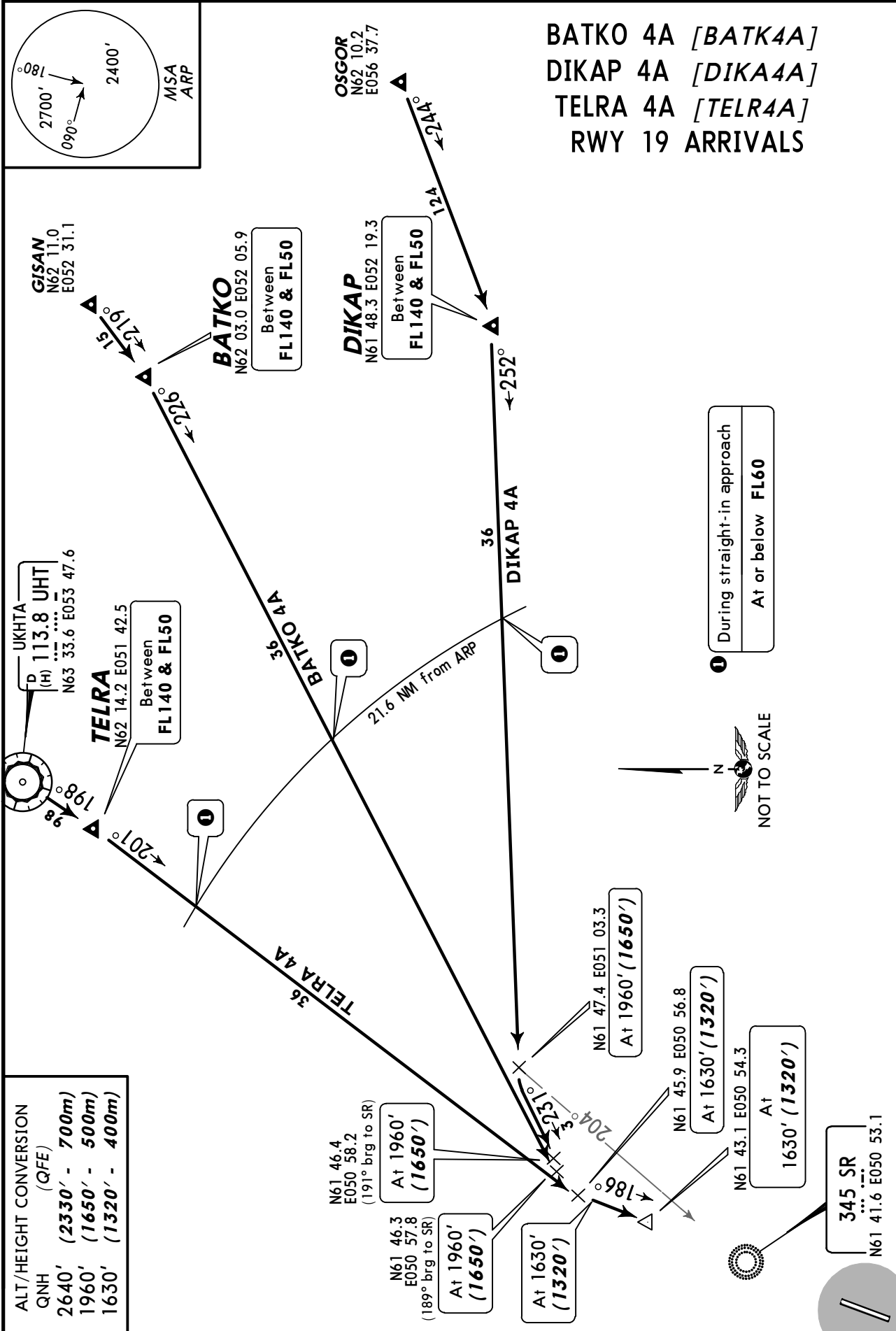
BATKO 2A [BATK2A]
DIKAP 2A [DIKA2A]
TELRA 2A [TELR2A]
RWY 01 ARRIVALS



CHANGES: FL conversion; crossings at BATKO, DIKAP & TELRA revised.

© JEPPESEN, 2003, 2011. ALL RIGHTS RESERVED.

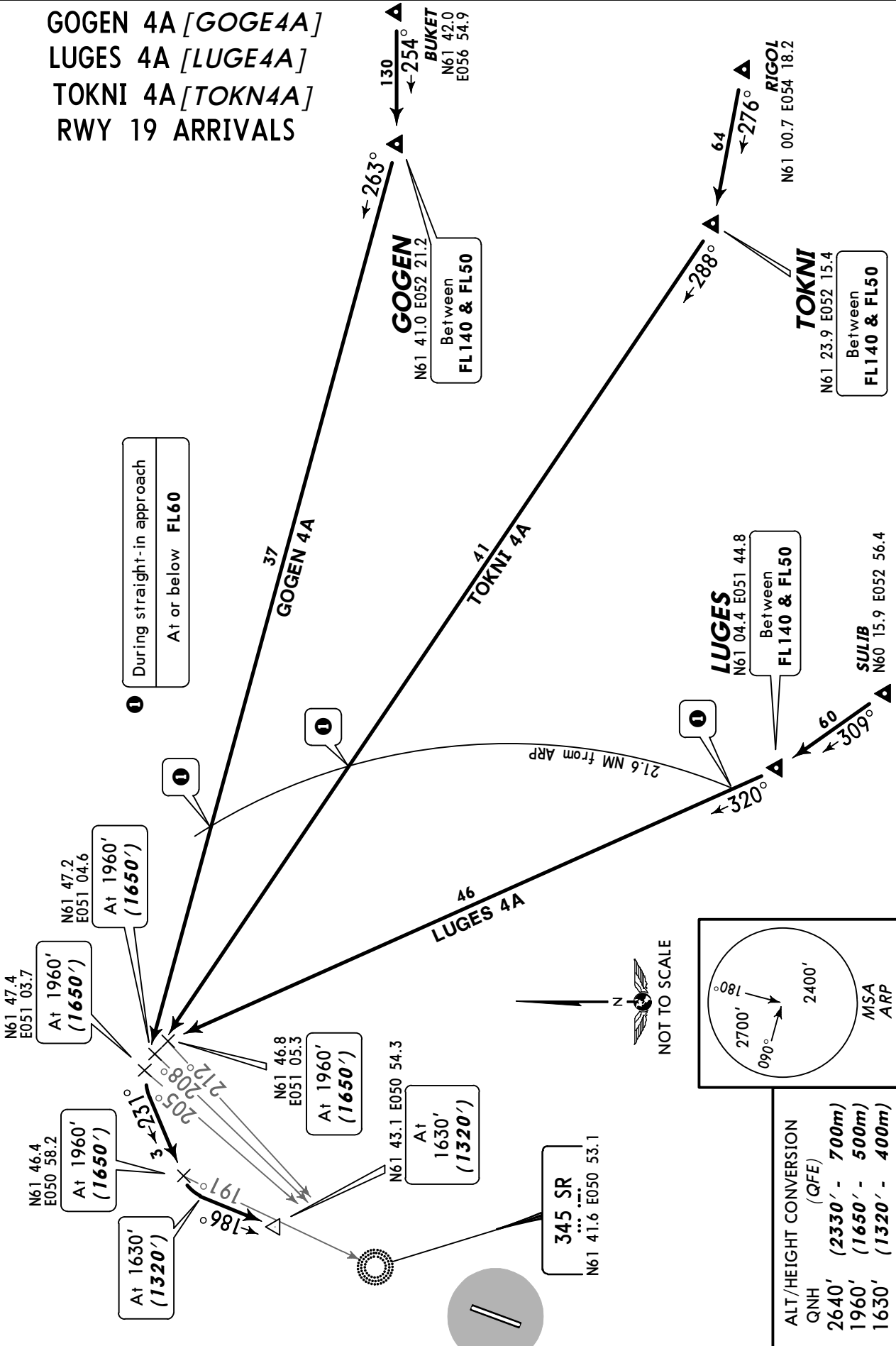
ATIS 126.6	Apt Elev 339'	Alt Set: MM (hPa on request) QNH on request (QFE) Trans level: FL40 FL50 if pressure is less than 760mm (1013.3 hPa) and 733mm (977.3 hPa) or above FL60 if pressure is less than 733mm (977.3 hPa) and 706mm (941.3 hPa) or above Trans alt: 2640' (2330')
---------------	------------------	---



CHANGES: FL conversion; crossings at BATKO, DIKAP & TELRA revised.

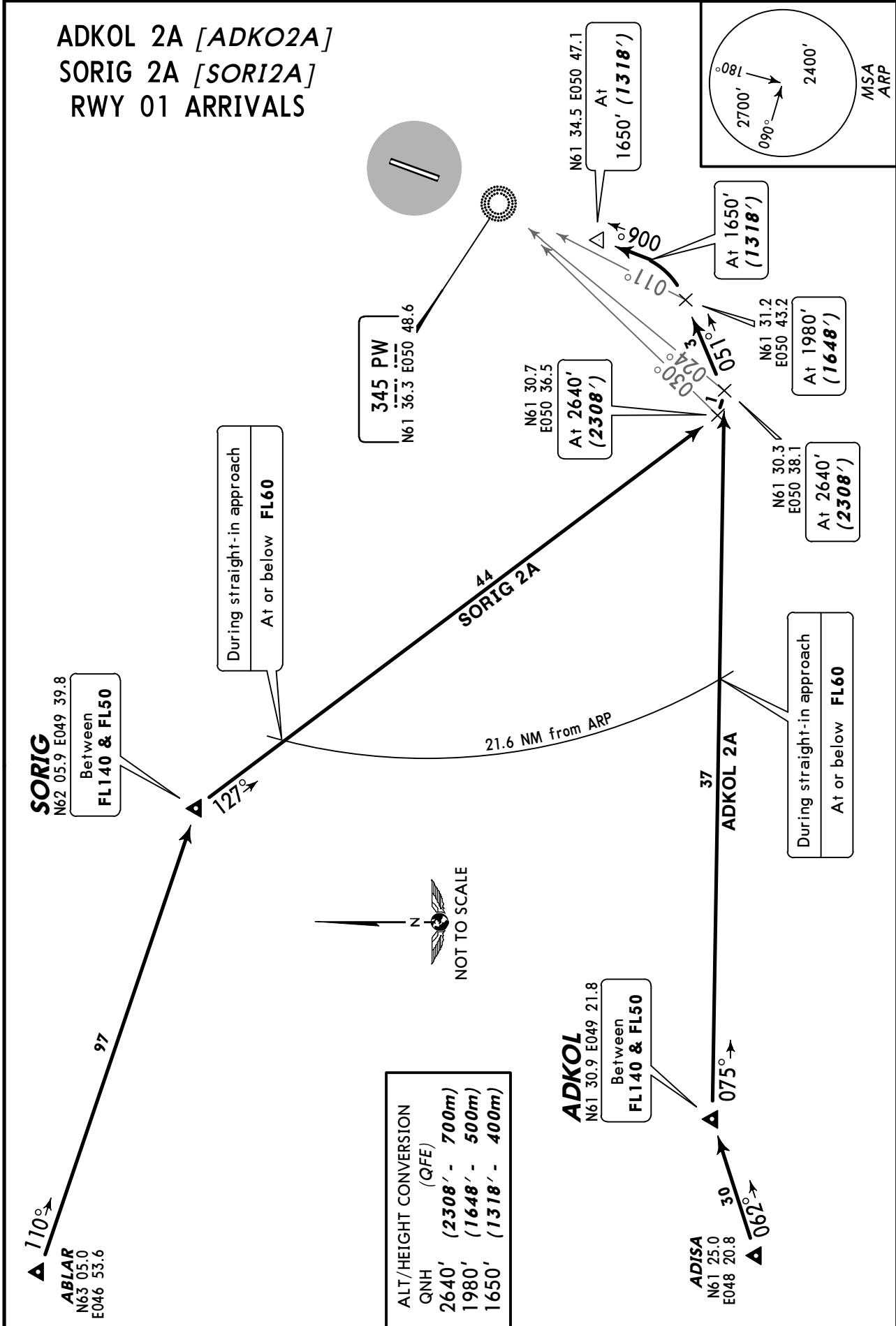
<p>ATIS 126.6</p>	<p>Apt Elev 339'</p>	<p>Alt Set: MM (hPa on request) QNH on request (QFE) Trans level: FL40 FL50 if pressure is less than 760mm (1013.3 hPa) and 733mm (977.3 hPa) or above FL60 if pressure is less than 733mm (977.3 hPa) and 706mm (941.3 hPa) or above Trans alt: 2640' (2330')</p>
-----------------------	--------------------------	--

GOKEN 4A [GOGE4A]
LUGES 4A [LUGE4A]
TOKNI 4A [TOKN4A]
RWY 19 ARRIVALS



<p>ATIS 126.6</p>	<p>Apt Elev 339'</p>	<p>Alt Set: MM (hPa on request) QNH on request (QFE) Trans level: FL40 FL50 if pressure is less than 760mm (1013.3 hPa) and 733mm (977.3 hPa) or above FL60 if pressure is less than 733mm (977.3 hPa) and 706mm (941.3 hPa) or above Trans alt: 2640' (2308')</p>
-----------------------	--------------------------	--

ADKOL 2A [ADKO2A]
SORIG 2A [SORI2A]
RWY 01 ARRIVALS

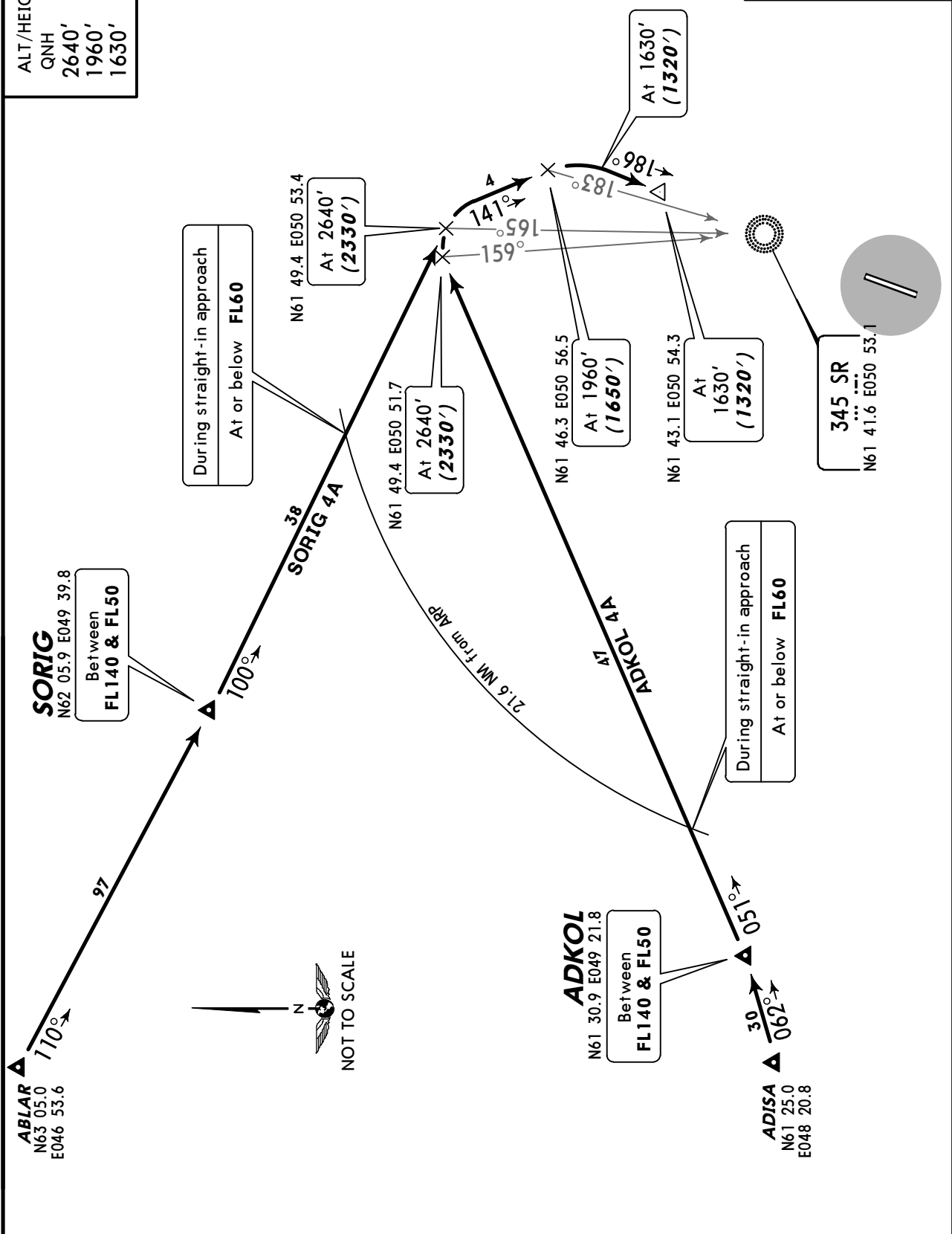
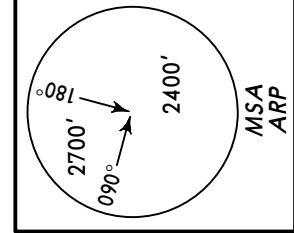


ALT/HEIGHT CONVERSION	
QNH	(QFE)
2640'	(2308' - 700m)
1980'	(1648' - 500m)
1650'	(1318' - 400m)

ATIS 126.6	Apt Elev 339'	Alt Set: MM (hPa on request) QNH on request (QFE) Trans level: FL40 FL50 if pressure is less than 760mm (1013.3 hPa) and 733mm (977.3 hPa) or above FL60 if pressure is less than 733mm (977.3 hPa) and 706mm (941.3 hPa) or above Trans alt: 2640' (2330')
---------------	------------------	---

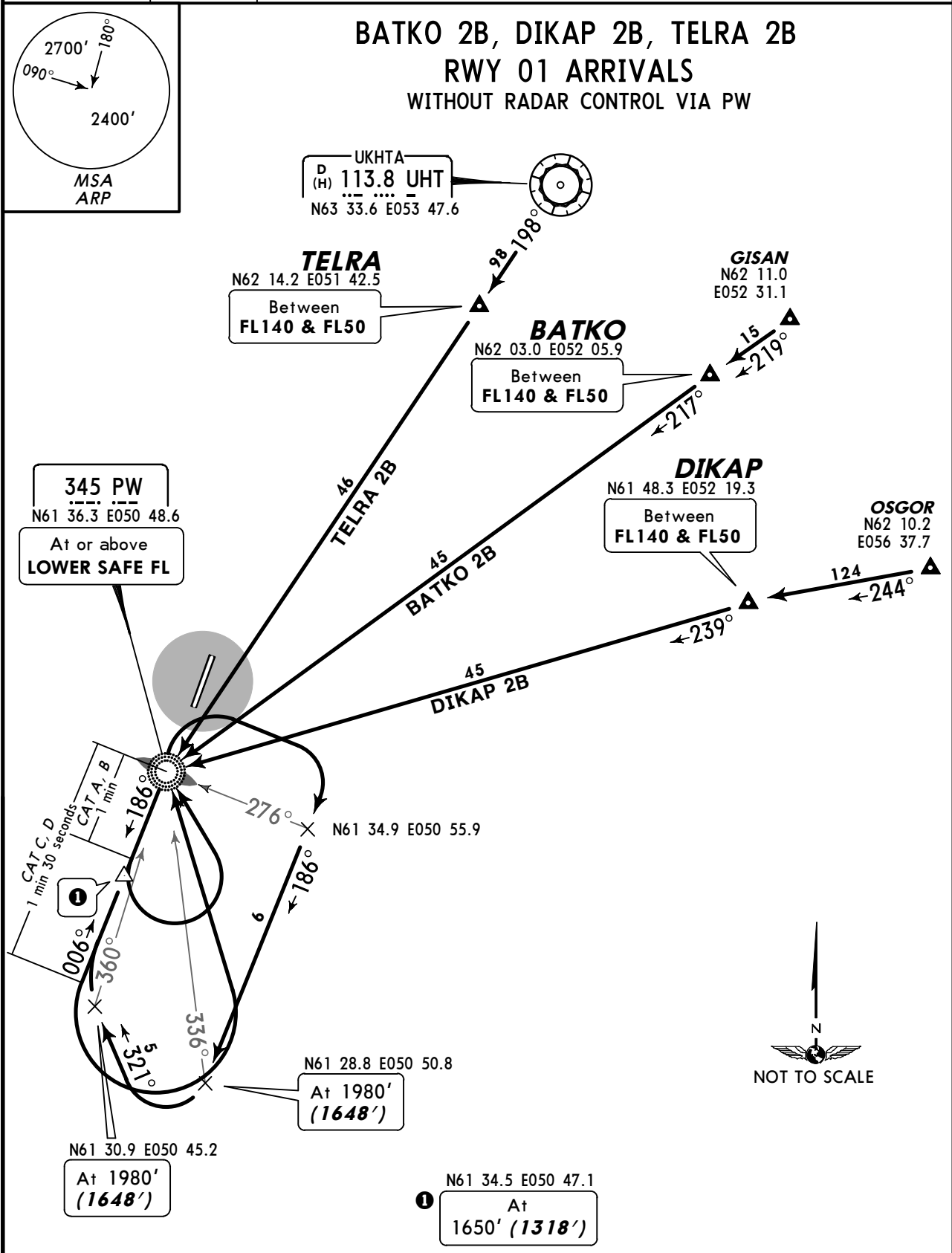
ALT/HEIGHT CONVERSION (QFE)	
QNH	2640'
	(2330' - 700m)
	1960'
	(1650' - 500m)
	1630'
	(1320' - 400m)

ADKOL 4A [ADKO4A]
SORIG 4A [SORI4A]
RWY 19 ARRIVALS



ATIS 126.6	Apt Elev 339'	Alt Set: MM (hPa on request) QNH on request (QFE) Trans level: FL40 FL50 if pressure is less than 760mm (1013.3 hPa) and 733mm (977.3 hPa) or above FL60 if pressure is less than 733mm (977.3 hPa) and 706mm (941.3 hPa) or above Trans alt: 2640' (2308') All turns shall be carried out with 25° bank.
---------------	------------------	--

**BATKO 2B, DIKAP 2B, TELRA 2B
RWY 01 ARRIVALS
WITHOUT RADAR CONTROL VIA PW**



345 PW
N61 36.3 E050 48.6
At or above
LOWER SAFE FL

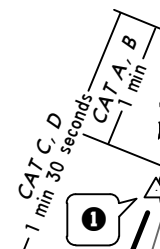
TELRA
N62 14.2 E051 42.5
Between
FL140 & FL50

BATKO
N62 03.0 E052 05.9
Between
FL140 & FL50

DIKAP
N61 48.3 E052 19.3
Between
FL140 & FL50

OSGOR
N62 10.2
E056 37.7

UKHTA
D (H) 113.8 UHT
N63 33.6 E053 47.6



N61 30.9 E050 45.2
At 1980'
(1648')

N61 28.8 E050 50.8
At 1980'
(1648')

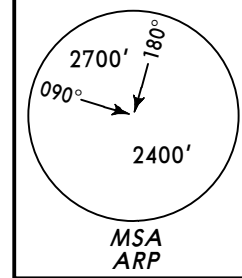
N61 34.5 E050 47.1
At
1650' (1318')

After passing PW, aircraft CAT A & B proceed on 186° track for 1 minute, aircraft CAT C & D proceed on 186° track for 1 minute 30 seconds, turn LEFT to PW, turn RIGHT, carry out instrument approach procedure.

ALT/HEIGHT CONVERSION	
QNH	(QFE)
2640'	(2308' - 700m)
1980'	(1648' - 500m)
1650'	(1318' - 400m)

ATIS 126.6	Apt Elev 339'	Alt Set: MM (hPa on request) QNH on request (QFE) Trans level: FL40 FL50 if pressure is less than 760mm (1013.3 hPa) and 733mm (977.3 hPa) or above FL60 if pressure is less than 733mm (977.3 hPa) and 706mm (941.3 hPa) or above Trans alt: 2640' (2330') All turns shall be carried out with 25° bank.
---------------	------------------	--

**BATKO 4B, DIKAP 4B, TELRA 4B
RWY 19 ARRIVALS
WITHOUT RADAR CONTROL VIA SR**



UKHTA
D 113.8 UHT
(H)
N63 33.6 E053 47.6

TELRA
N62 14.2 E051 42.5
Between
FL140 & FL50

GISAN
N62 11.0
E052 31.1

BATKO
N62 03.0 E052 05.9
Between
FL140 & FL50

N61 46.4
E050 58.2
At 1960'
(1650')

N61 46.0
E051 05.3
At 1960'
(1650')

N61 43.1
E050 54.3
At 1630'
(1320')

DIKAP
N61 48.3 E052 19.3
Between
FL140 & FL50

OSGOR
N62 10.2
E056 37.7

345 SR
N61 41.6 E050 53.1
At or above
LOWER SAFE FL

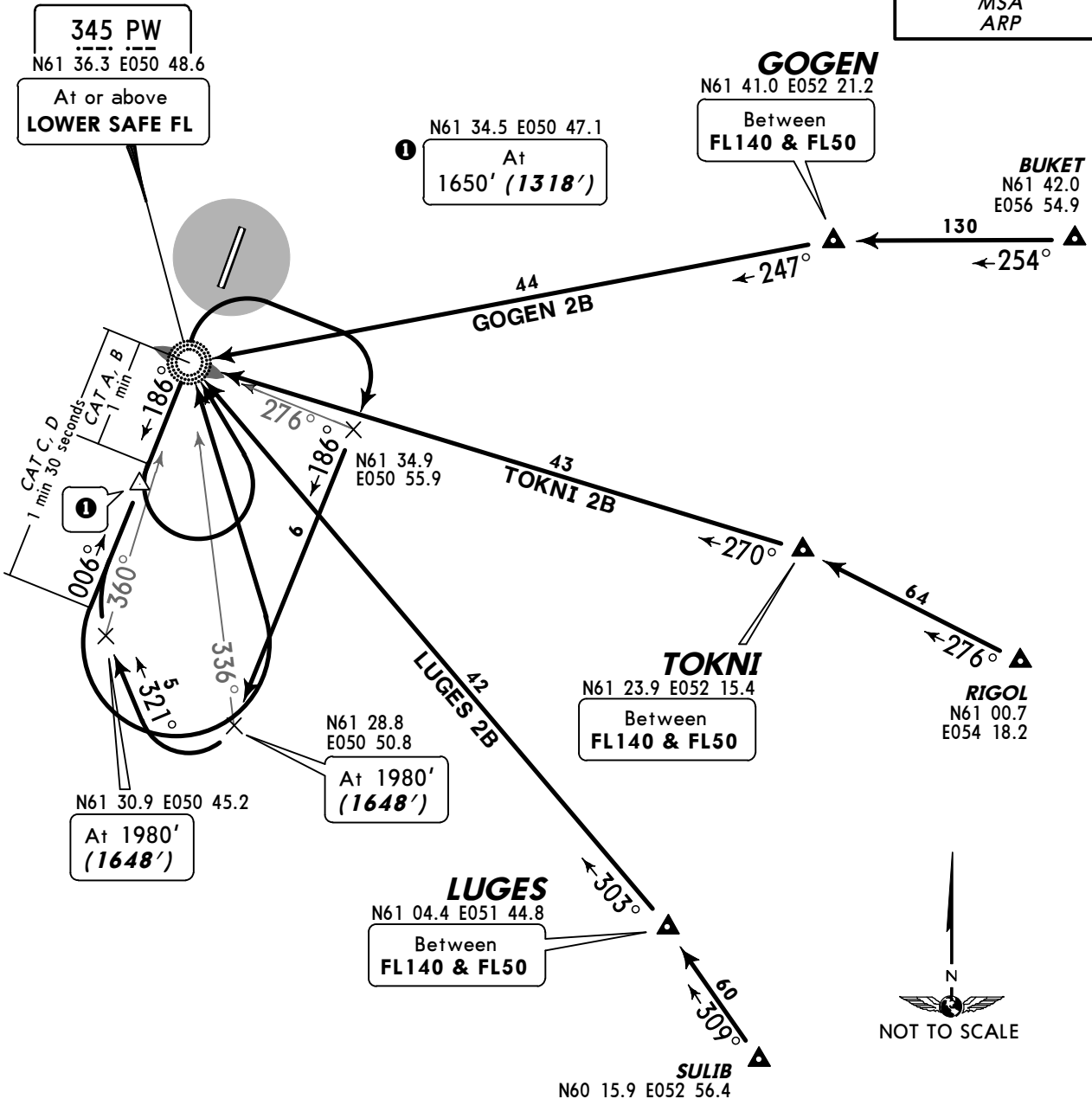
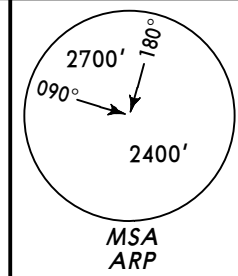
After passing SR, turn LEFT, carry out instrument approach procedure.



ALT/HEIGHT CONVERSION	
QNH	(QFE)
2640'	(2330' - 700m)
1960'	(1650' - 500m)
1630'	(1320' - 400m)

ATIS 126.6	Apt Elev 339'	Alt Set: MM (hPa on request) QNH on request (QFE) Trans level: FL40 FL50 if pressure is less than 760mm (1013.3 hPa) and 733mm (977.3 hPa) or above FL60 if pressure is less than 733mm (977.3 hPa) and 706mm (941.3 hPa) or above Trans alt: 2640' (2308') All turns shall be carried out with 25° bank.
----------------------	-------------------------	--

GOKEN 2B
LUGES 2B [LUGE2B], TOKNI 2B
RWY 01 ARRIVALS
WITHOUT RADAR CONTROL VIA PW



345 PW
N61 36.3 E050 48.6
At or above
LOWER SAFE FL

1 N61 34.5 E050 47.1
At
1650' (1318')

GOKEN
N61 41.0 E052 21.2
Between
FL140 & FL50

BUKET
N61 42.0 E056 54.9

N61 30.9 E050 45.2
At 1980'
(1648')

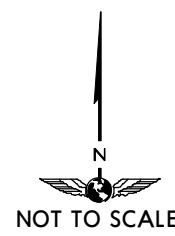
N61 28.8 E050 50.8
At 1980'
(1648')

TOKNI
N61 23.9 E052 15.4
Between
FL140 & FL50

RIGOL
N61 00.7 E054 18.2

LUGES
N61 04.4 E051 44.8
Between
FL140 & FL50

SULIB
N60 15.9 E052 56.4



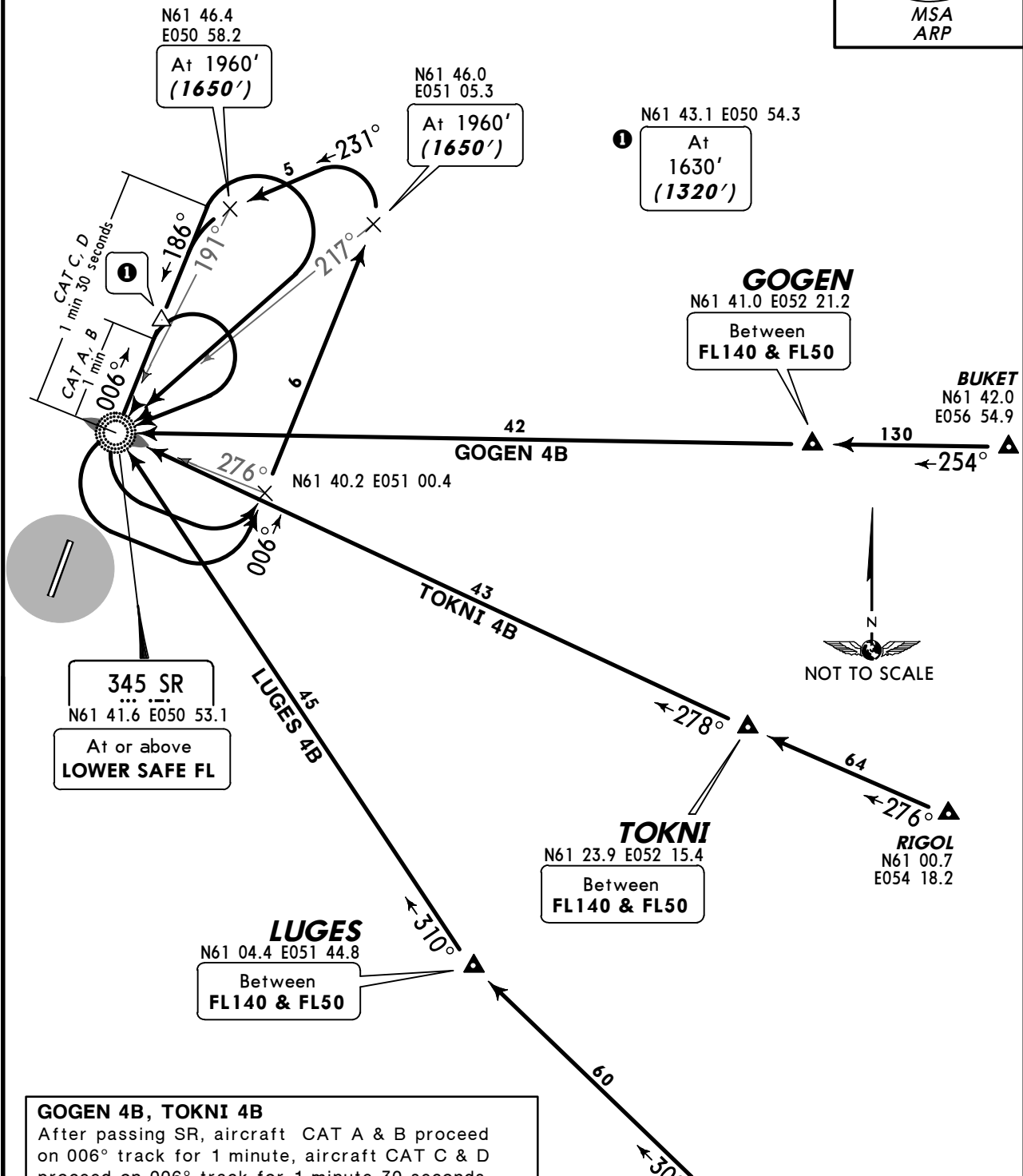
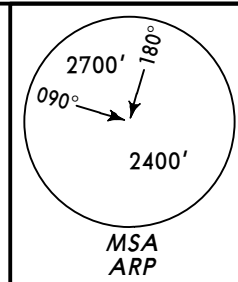
GOKEN 2B, TOKNI 2B:
After passing PW, aircraft CAT A & B proceed on 186° track for 1 minute, aircraft CAT C & D proceed on 186° track for 1 minute 30 seconds, turn LEFT to PW, turn RIGHT, carry out instrument approach procedure.

LUGES 2B:
After passing PW turn RIGHT, carry out instrument approach procedure.

ALT/HEIGHT CONVERSION	
QNH	(QFE)
2640'	(2308' - 700m)
1980'	(1648' - 500m)
1650'	(1318' - 400m)

ATIS 126.6	Apt Elev 339'	Alt Set: MM (hPa on request) QNH on request (QFE) Trans level: FL40 FL50 if pressure is less than 760mm (1013.3 hPa) and 733mm (977.3 hPa) or above FL60 if pressure is less than 733mm (977.3 hPa) and 706mm (941.3 hPa) or above Trans alt: 2640' (2330') All turns shall be carried out with 25° bank.
----------------------	-------------------------	--

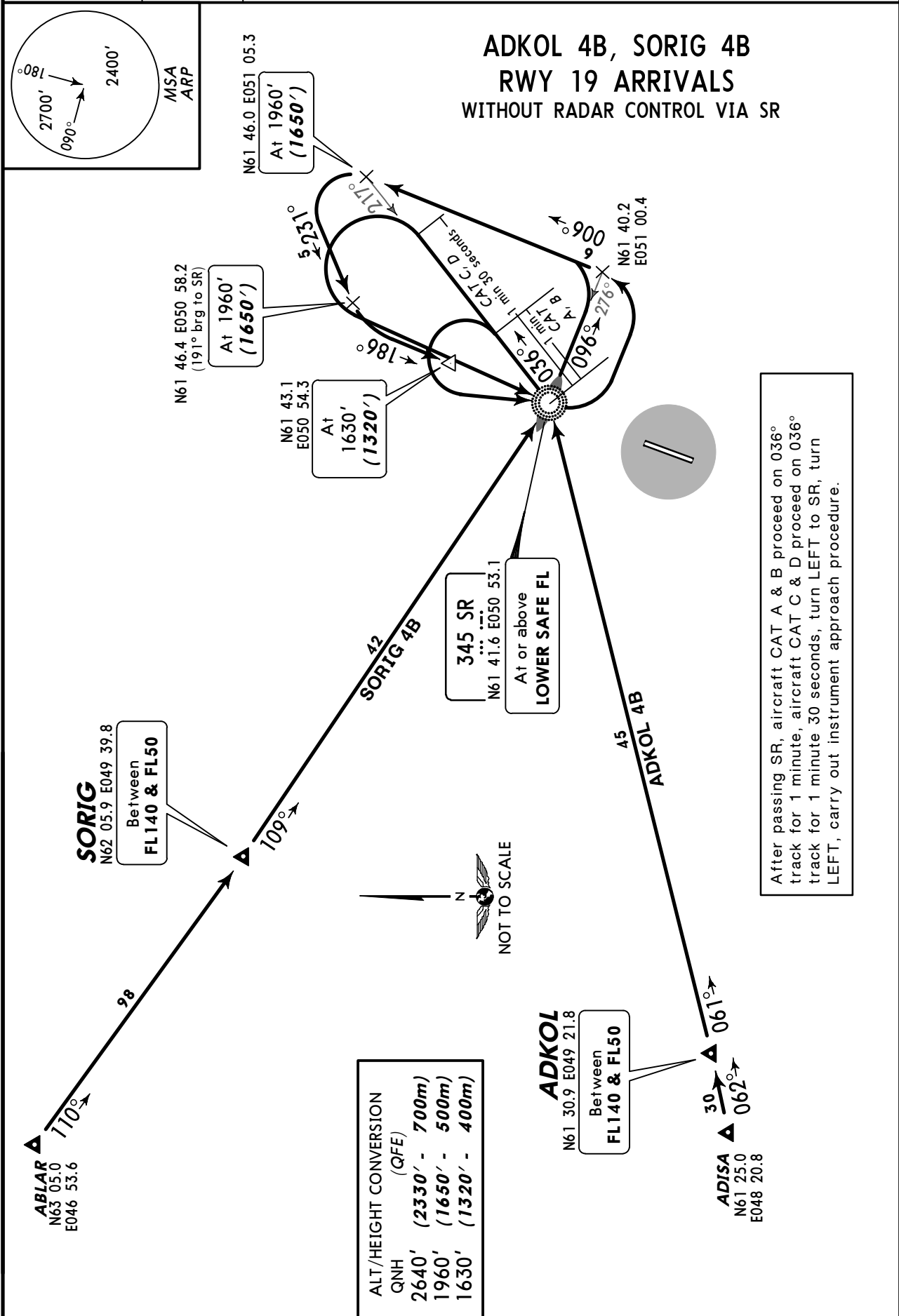
**GOGEN 4B, LUGES 4B
TOKNI 4B
RWY 19 ARRIVALS
WITHOUT RADAR CONTROL VIA SR**



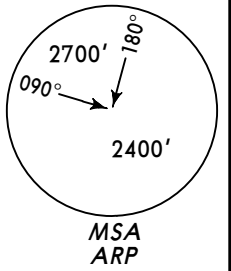
GOGEN 4B, TOKNI 4B
 After passing SR, aircraft CAT A & B proceed on 006° track for 1 minute, aircraft CAT C & D proceed on 006° track for 1 minute 30 seconds, turn RIGHT to SR, turn LEFT, carry out instrument approach procedure.
LUGES 4B
 After passing SR, turn LEFT, carry out instrument approach procedure.

ALT/HEIGHT CONVERSION	
QNH	(QFE)
2640'	(2330' - 700m)
1960'	(1650' - 500m)
1630'	(1320' - 400m)

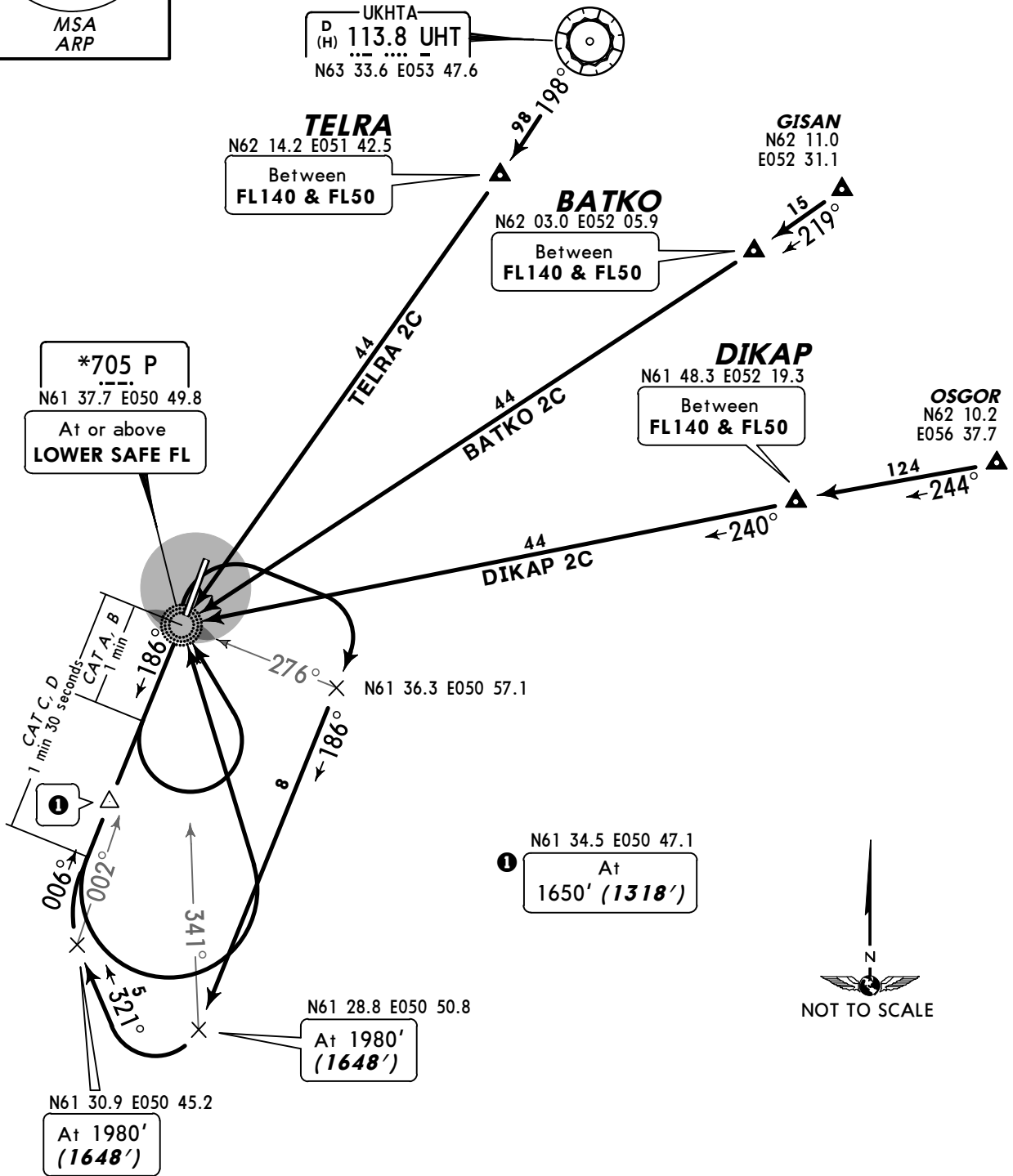
ATIS 126.6	Apt Elev 339'	Alt Set: MM (hPa on request) QNH on request (QFE) Trans level: FL40 FL50 if pressure is less than 760mm (1013.3 hPa) and 733mm (977.3 hPa) or above FL60 if pressure is less than 733mm (977.3 hPa) and 706mm (941.3 hPa) or above Trans alt: 2640' (2330') All turns shall be carried out with 25° bank.
---------------	------------------	--



ATIS 126.6	Apt Elev 339'	Alt Set: MM (hPa on request) QNH on request (QFE) Trans level: FL40 FL50 if pressure is less than 760mm (1013.3 hPa) and 733mm (977.3 hPa) or above FL60 if pressure is less than 733mm (977.3 hPa) and 706mm (941.3 hPa) or above Trans alt: 2640' (2308') All turns shall be carried out with 25° bank.
----------------------	-------------------------	--



BATKO 2C, DIKAP 2C, TELRA 2C
RWY 01 ARRIVALS
WITHOUT RADAR CONTROL VIA P

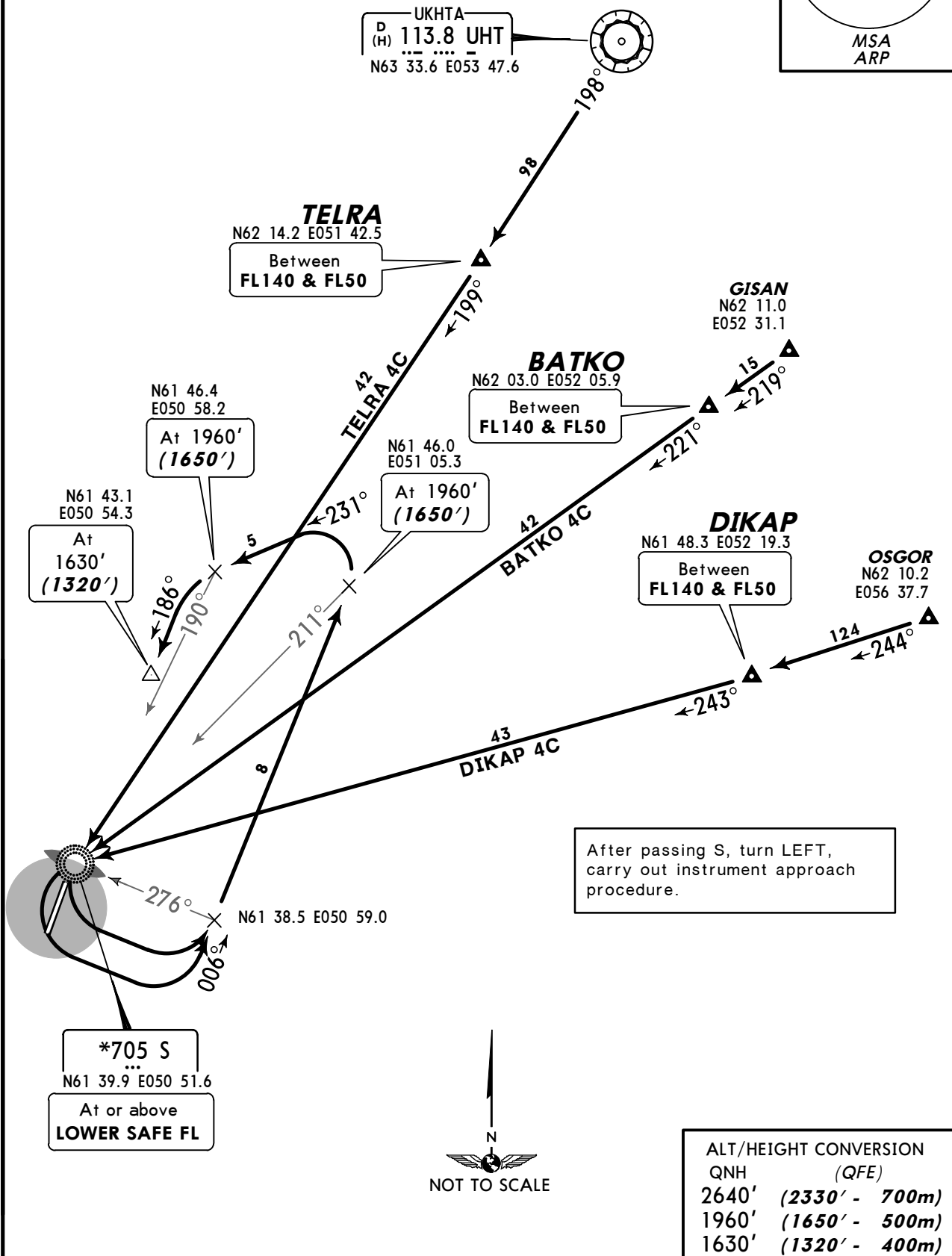
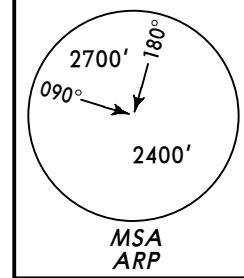


After passing P, aircraft CAT A & B proceed on 186° track for 1 minute, aircraft CAT C & D proceed on 186° track for 1 minute 30 seconds, turn LEFT to P, turn RIGHT, carry out instrument approach procedure.

ALT/HEIGHT CONVERSION	
QNH	(QFE)
2640'	(2308' - 700m)
1980'	(1648' - 500m)
1650'	(1318' - 400m)

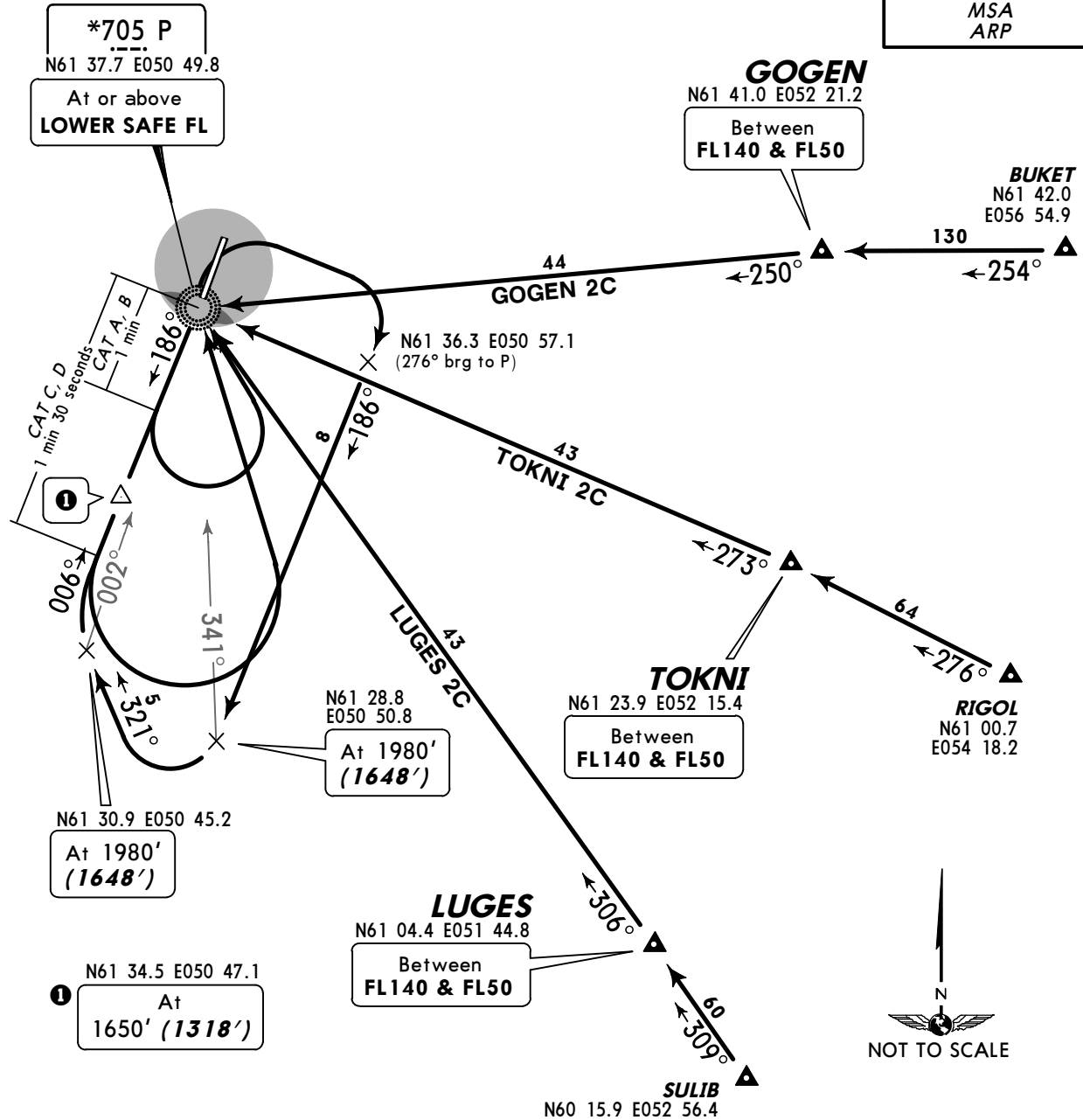
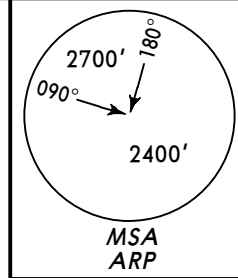
ATIS 126.6	Apt Elev 339'	Alt Set: MM (hPa on request) QNH on request (QFE) Trans level: FL40 FL50 if pressure is less than 760mm (1013.3 hPa) and 733mm (977.3 hPa) or above FL60 if pressure is less than 733mm (977.3 hPa) and 706mm (941.3 hPa) or above Trans alt: 2640' (2330') All turns shall be carried out with 25° bank.
---------------	------------------	--

BATKO 4C, DIKAP 4C, TELRA 4C
RWY 19 ARRIVALS
WITHOUT RADAR CONTROL VIA S



ATIS 126.6	Apt Elev 339'	Alt Set: MM (hPa on request) QNH on request (QFE) Trans level: FL40 FL50 if pressure is less than 760mm (1013.3 hPa) and 733mm (977.3 hPa) or above FL60 if pressure is less than 733mm (977.3 hPa) and 706mm (941.3 hPa) or above Trans alt: 2640' (2308') All turns shall be carried out with 25° bank.
----------------------	-------------------------	--

**GOKEN 2C, LUGES 2C, TOKNI 2C
RWY 01 ARRIVALS
WITHOUT RADAR CONTROL VIA P**



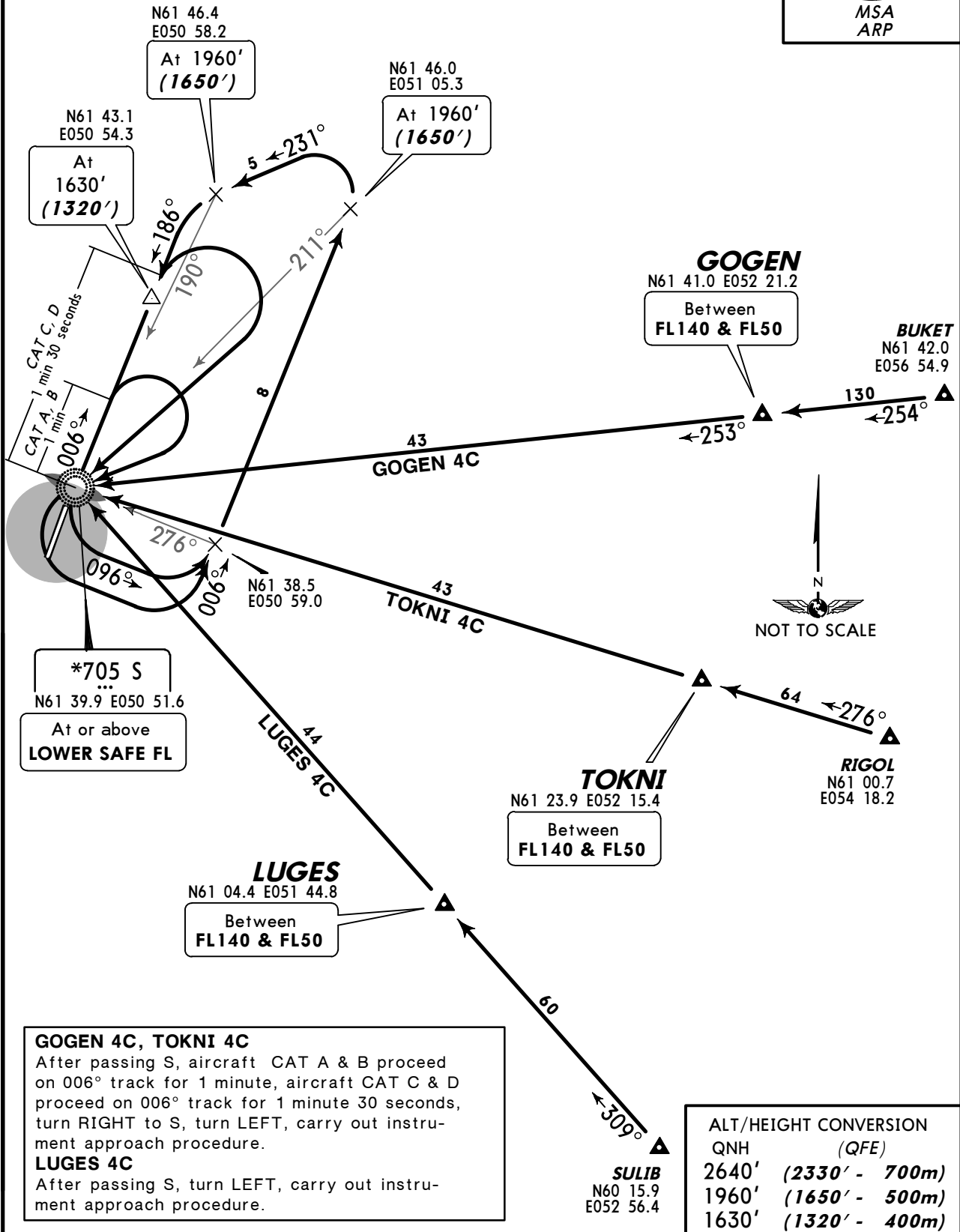
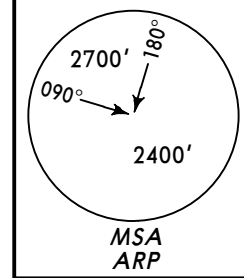
GOKEN 2C, TOKNI 2C:
After passing P, aircraft CAT A & B proceed on 186° track for 1 minute, aircraft CAT C & D proceed on 186° track for 1 minute 30 seconds, turn LEFT to P, turn RIGHT, carry out instrument approach procedure.

LUGES 2C:
After passing P turn RIGHT, carry out instrument approach procedure.

ALT/HEIGHT CONVERSION	
QNH	(QFE)
2640'	(2308' - 700m)
1980'	(1648' - 500m)
1650'	(1318' - 400m)

ATIS 126.6	Apt Elev 339'	Alt Set: MM (hPa on request) QNH on request (QFE) Trans level: FL40 FL50 if pressure is less than 760mm (1013.3 hPa) and 733mm (977.3 hPa) or above FL60 if pressure is less than 733mm (977.3 hPa) and 706mm (941.3 hPa) or above Trans alt: 2640' (2330') All turns shall be carried out with 25° bank.
----------------------	-------------------------	--

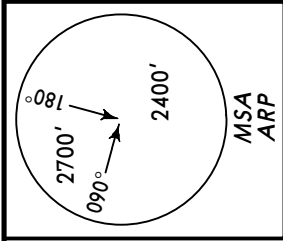
**GOGEN 4C, LUGES 4C
TOKNI 4C
RWY 19 ARRIVALS
WITHOUT RADAR CONTROL VIA S**



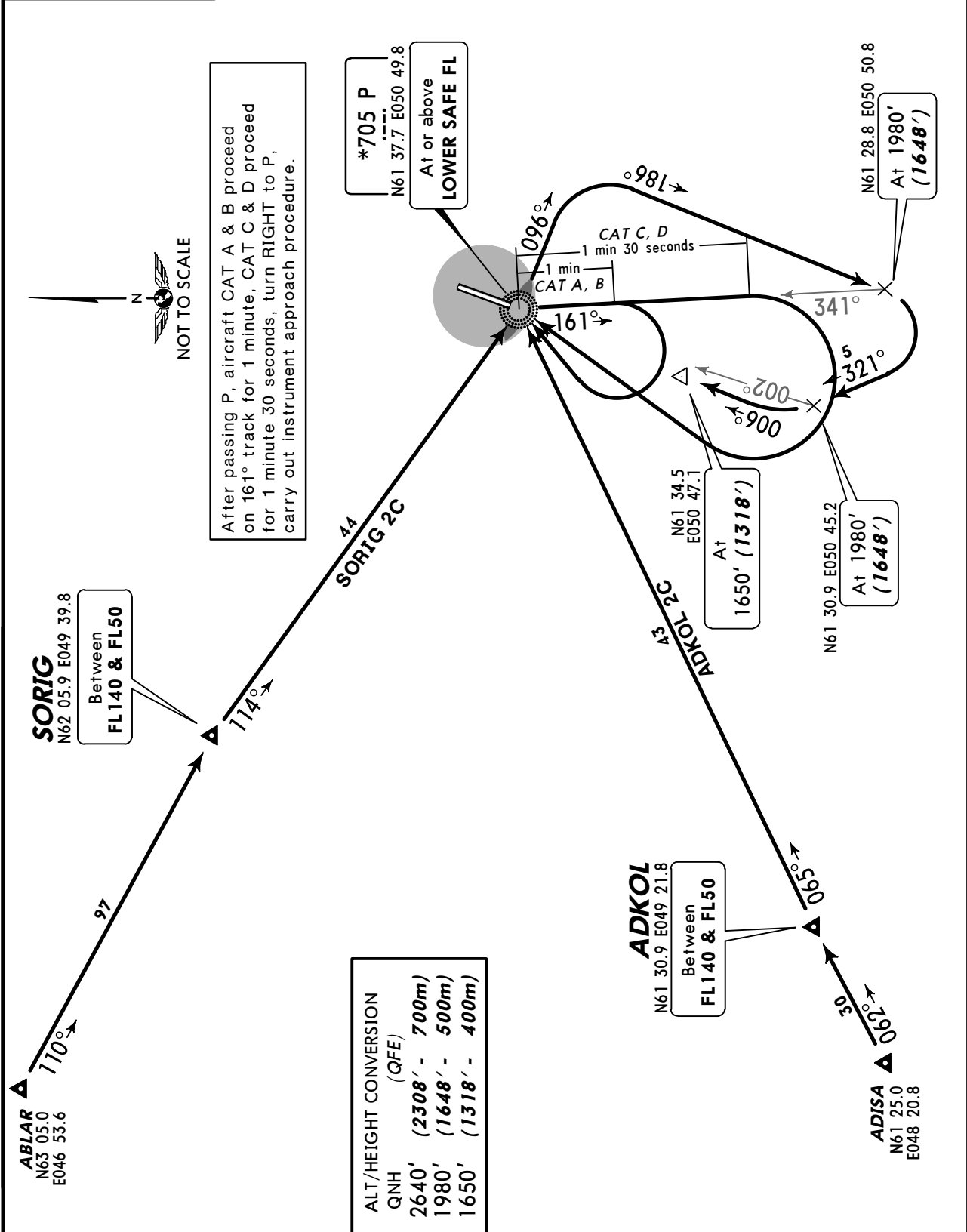
GOGEN 4C, TOKNI 4C
 After passing S, aircraft CAT A & B proceed on 006° track for 1 minute, aircraft CAT C & D proceed on 006° track for 1 minute 30 seconds, turn RIGHT to S, turn LEFT, carry out instrument approach procedure.

LUGES 4C
 After passing S, turn LEFT, carry out instrument approach procedure.

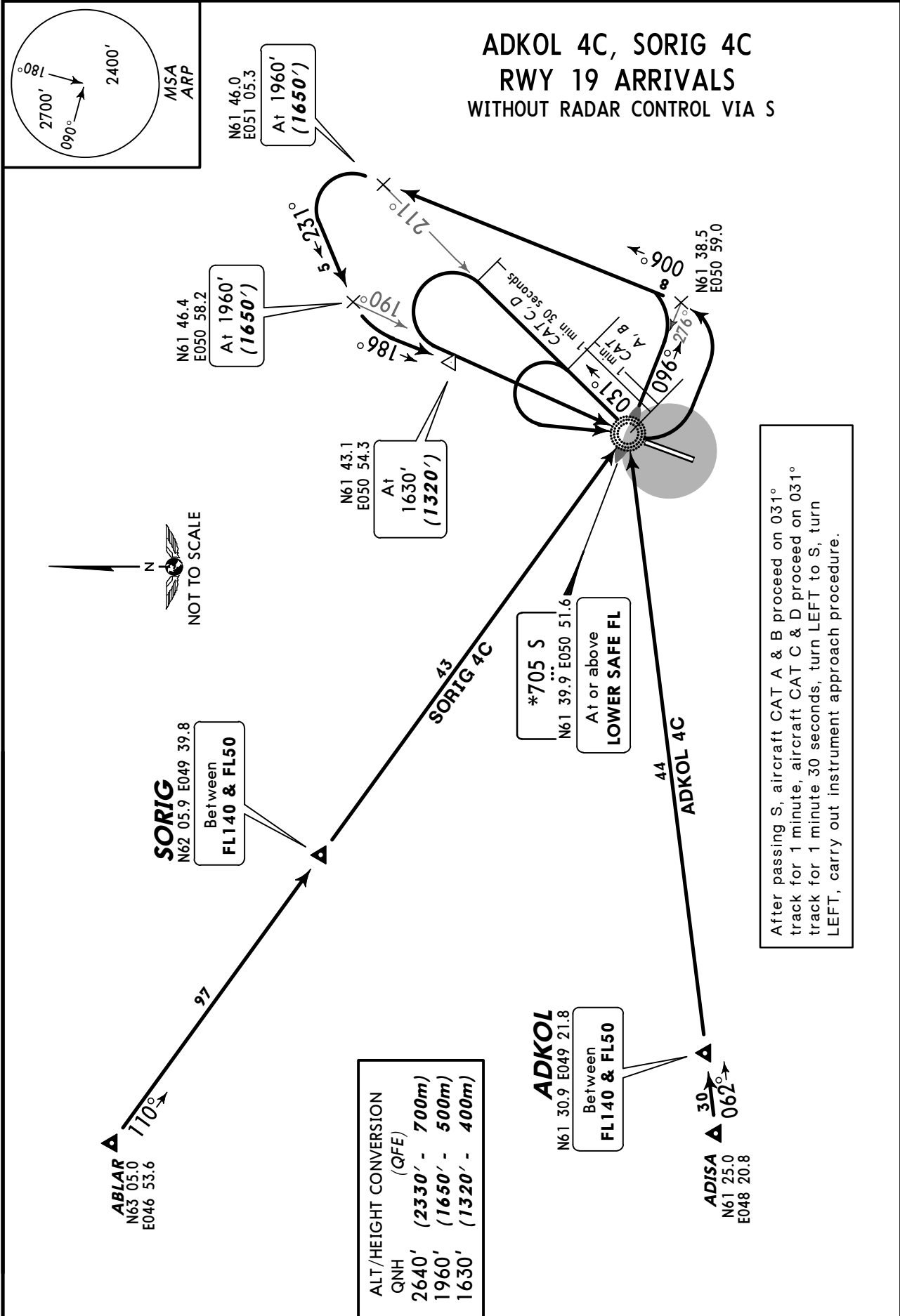
ATIS 126.6	Apt Elev 339'	Alt Set: MM (hPa on request) QNH on request (QFE) Trans level: FL40 FL50 if pressure is less than 760mm (1013.3 hPa) and 733mm (977.3 hPa) or above FL60 if pressure is less than 733mm (977.3 hPa) and 706mm (941.3 hPa) or above Trans alt: 2640' (2308') All turns shall be carried out with 25° bank.
---------------	------------------	--



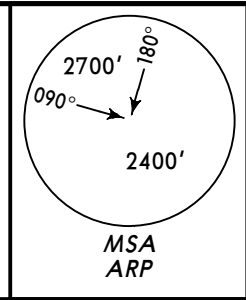
ADKOL 2C, SORIG 2C
RWY 01 ARRIVALS
WITHOUT RADAR CONTROL VIA P



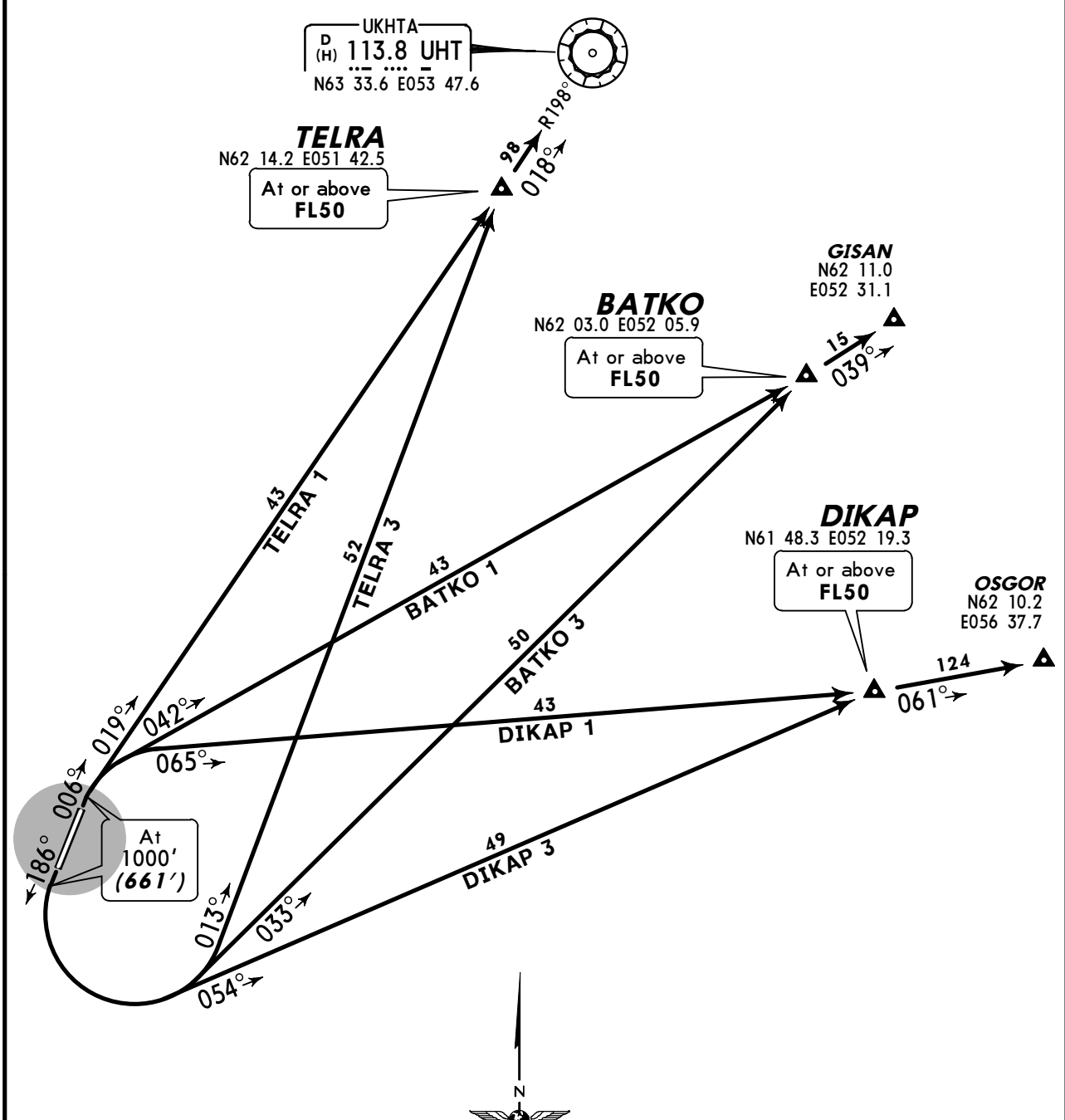
ATIS 126.6	Apt Elev 339'	Alt Set: MM (hPa on request) QNH on request (QFE) Trans level: FL40 FL50 if pressure is less than 760mm (1013.3 hPa) and 733mm (977.3 hPa) or above FL60 if pressure is less than 733mm (977.3 hPa) and 706mm (941.3 hPa) or above Trans alt: 2640' (2330') All turns shall be carried out with 25° bank.
---------------	------------------	--



<p>*SIVKAR Krug 124.6</p>	<p>QNH on request (QFE) Trans level: FL40 FL50 if pressure is less than 760mm (1013.3 hPa) and 733mm (977.3 hPa) or above FL60 if pressure is less than 733mm (977.3 hPa) and 706mm (941.3 hPa) or above Trans alt: 2640' (2301') 1. Control of SIDs maintained by SIVKAR Krug. 2. Take-off of CAT B, C, D aircraft should be carried out with noise abatement procedure according to Flight Manual.</p>
<p>Apt Elev 339'</p>	



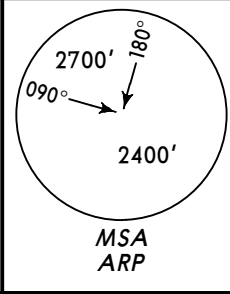
**BATKO 1, BATKO 3
DIKAP 1, DIKAP 3
TELRA 1, TELRA 3
RWYS 01, 19 DEPARTURES**



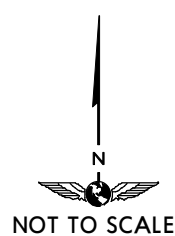
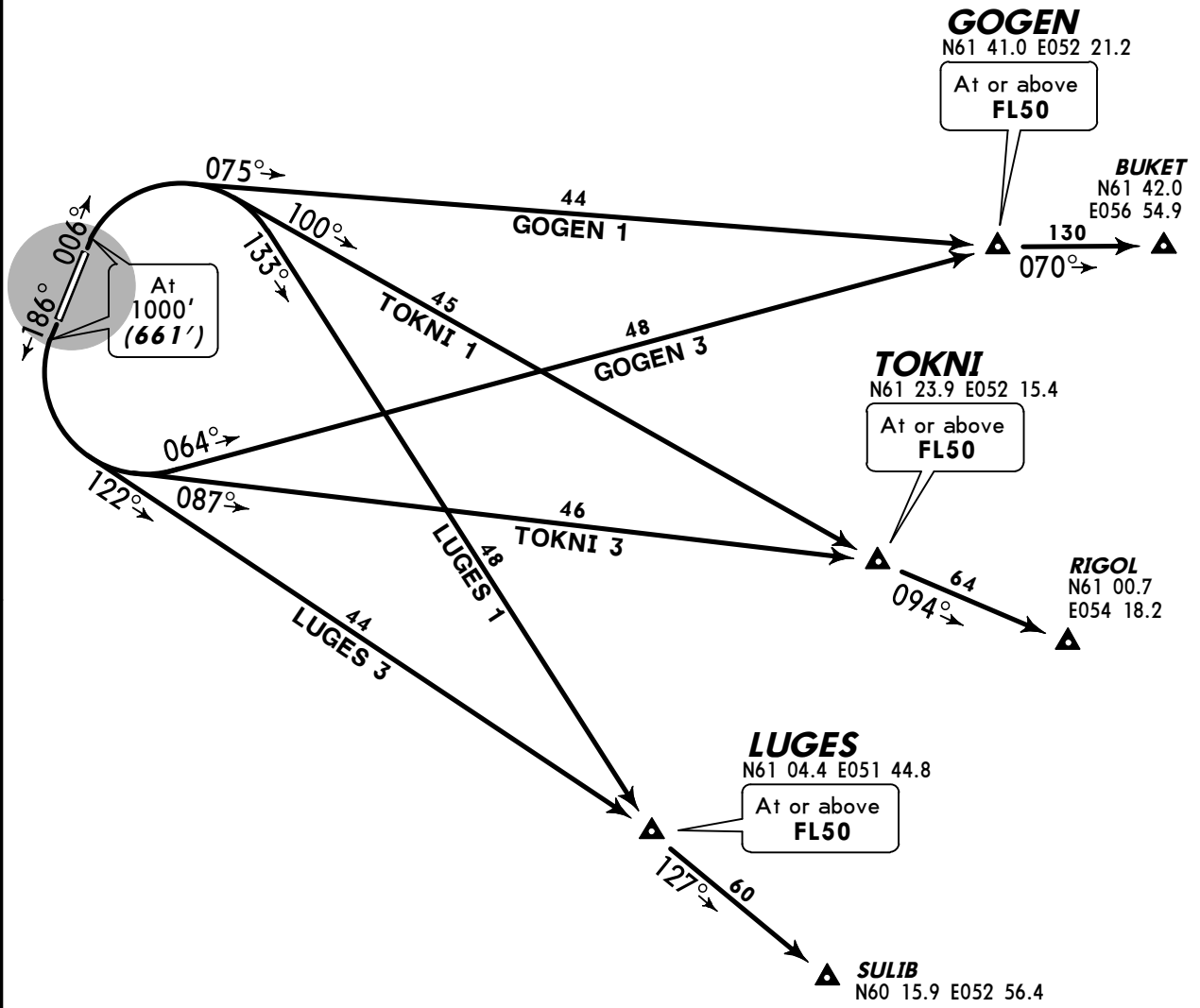
NOT TO SCALE

ALT/HEIGHT CONVERSION	
QNH	(QFE)
1000'	(661' - 200m)
2640'	(2301' - 700m)

<p>*SIVKAR Krug 124.6</p>	<p>QNH on request (QFE) Trans level: FL40 FL50 if pressure is less than 760mm (1013.3 hPa) and 733mm (977.3 hPa) or above FL60 if pressure is less than 733mm (977.3 hPa) and 706mm (941.3 hPa) or above Trans alt: 2640' (2301') 1. Control of SIDs maintained by SIVKAR Krug. 2. Take-off of CAT B, C, D aircraft should be carried out with noise abatement procedure according to Flight Manual.</p>
<p>Apt Elev 339'</p>	

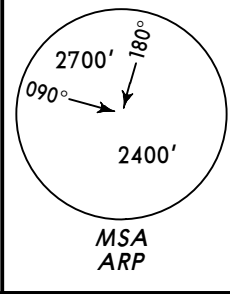


**GOGEN 1, GOGEN 3
LUGES 1, LUGES 3
TOKNI 1, TOKNI 3
RWYS 01, 19 DEPARTURES**

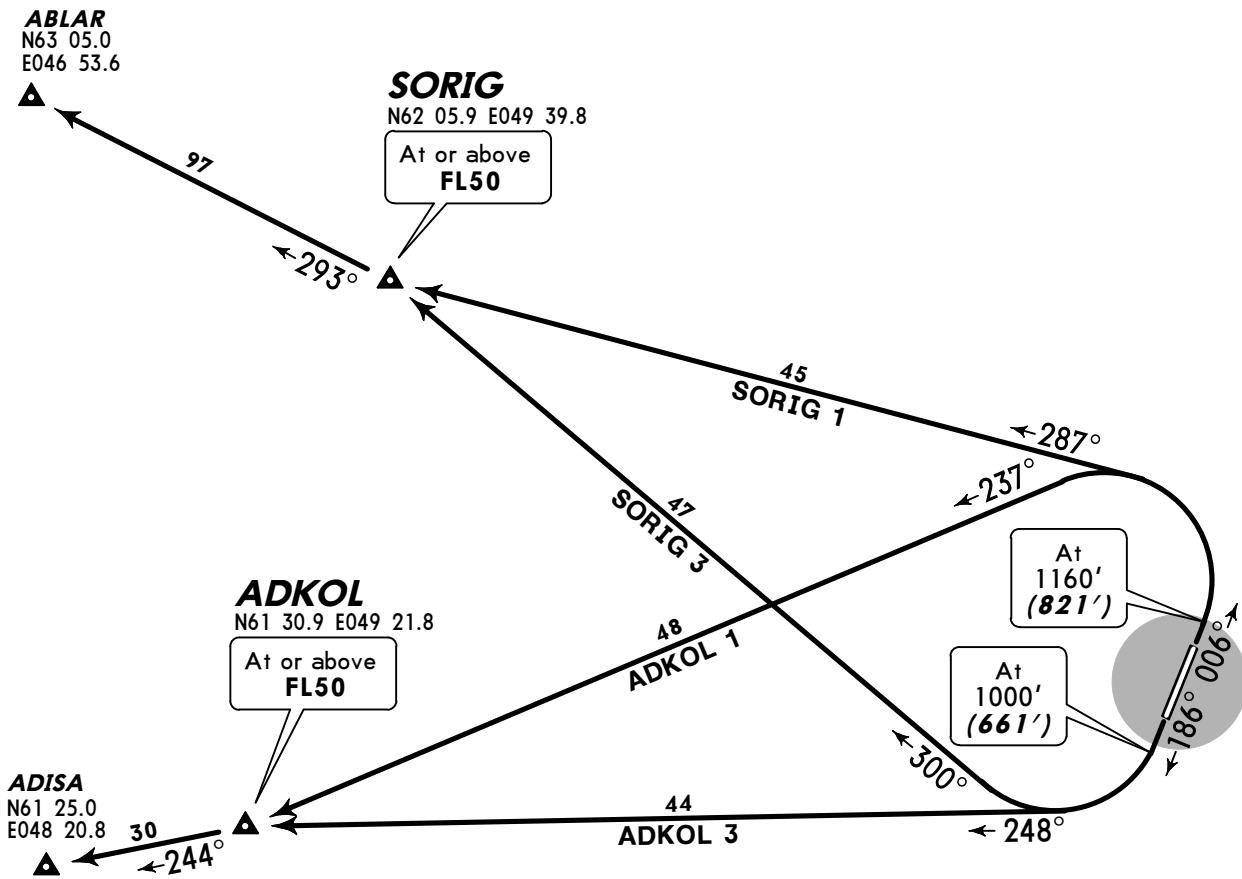


ALT/HEIGHT CONVERSION	
QNH	(QFE)
1000'	(661' - 200m)
2640'	(2301' - 700m)

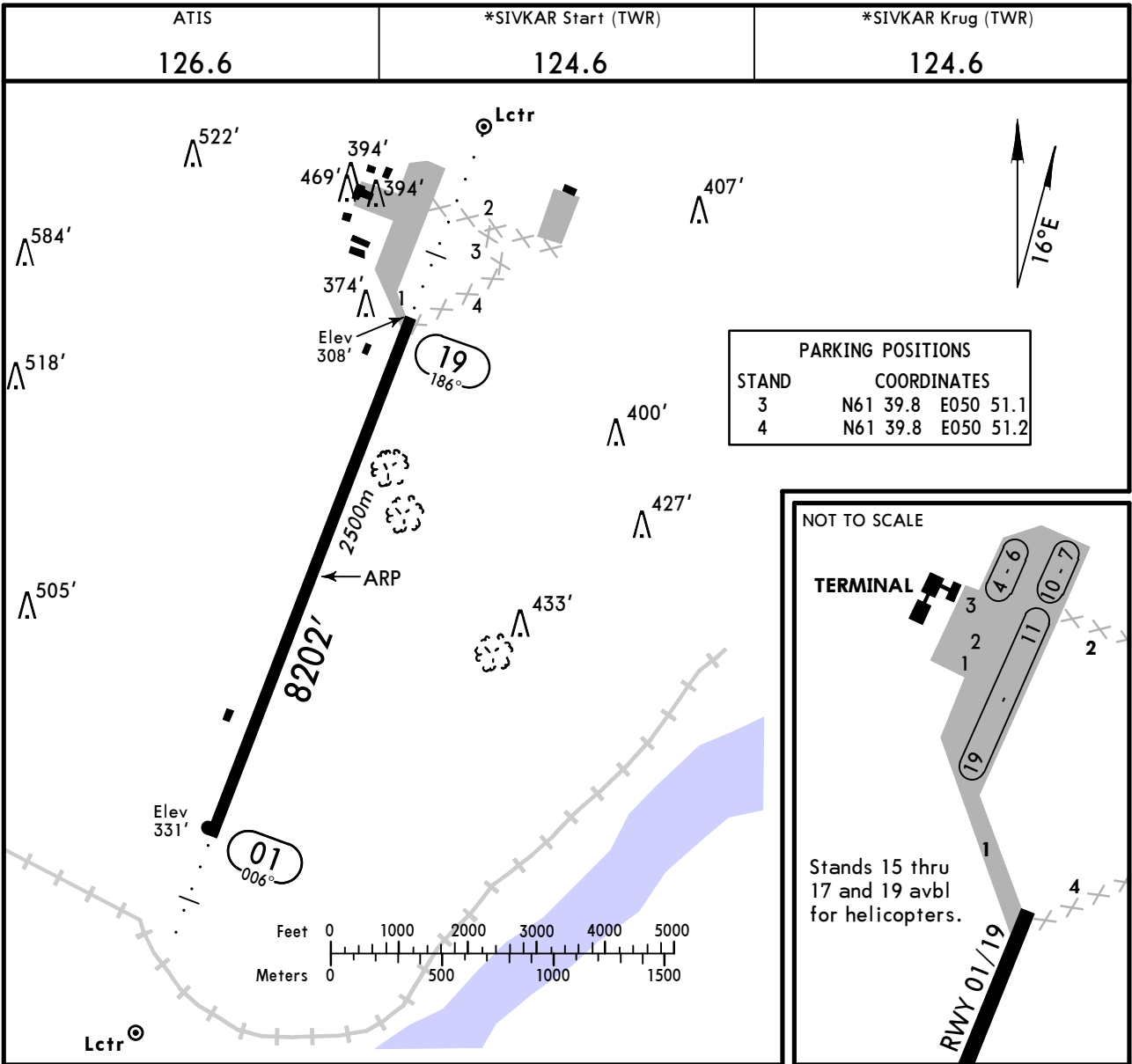
<p>*SIVKAR Krug 124.6</p>	<p>QNH on request (QFE) Trans level: FL40 FL50 if pressure is less than 760mm (1013.3 hPa) and 733mm (977.3 hPa) or above FL60 if pressure is less than 733mm (977.3 hPa) and 706mm (941.3 hPa) or above Trans alt: 2640' (2301')</p> <p>1. Control of SIDs maintained by SIVKAR Krug. 2. Take-off of CAT B, C, D aircraft should be carried out with noise abatement procedure according to Flight Manual.</p>
<p>Apt Elev 339'</p>	



ADKOL 1, ADKOL 3
SORIG 1, SORIG 3
RWYS 01, 19 DEPARTURES



ALT/HEIGHT CONVERSION	
QNH	(QFE)
1000'	(661' - 200m)
1160'	(821' - 250m)
2640'	(2301' - 700m)



ADDITIONAL RUNWAY INFORMATION

RWY	HIRL (58m) ALS	RVR	USABLE LENGTHS		TAKE-OFF	WIDTH
			Threshold	Glide Slope		
01	HIRL (58m) ALS	RVR				164'
19	HIRL (58m) ALS PAPI-L (angle 3.00°)	RVR		7119' 2170m		50m

TAKE-OFF

**AIR CARRIER (JAA)
 All Rwys**

	LVP must be in force RCLM (DAY only) or RL	RCLM (DAY only) or RL
A		
B	250m	
C		400m
D	300m	

STRAIGHT-IN RWY		A	B	C	D
01	ILS	532' (200')	532' (200')	532' (200')	532' (200')
	<i>ALS out</i>	R1000m R1200m	R1000m R1200m	R1000m R1200m	R1000m R1200m
	LOC	NOT AUTH	NOT AUTH	NOT AUTH	NOT AUTH
19	NDB ①	710' (378')	710' (378')	710' (378')	710' (378')
	<i>ALS out</i>	R1500m R1700m	R1500m R1700m	R1500m R1700m	R1500m R1700m
	ILS	510' (200')	510' (200')	510' (200')	510' (200')
19	<i>ALS out</i>	R1000m R1200m	R1000m R1200m	R1000m R1200m	R1000m R1200m
	LOC	NOT AUTH	NOT AUTH	NOT AUTH	NOT AUTH
	NDB ①	720' (410')	720' (410')	720' (410')	720' (410')
<i>ALS out</i>	R1700m R1900m	R1700m R1900m	R1700m R1900m	R1700m R1900m	

① Continuous Descent Final Approach.

TAKE-OFF RWY 01, 19

LVP must be in Force			
	RCLM (DAY only) or RL	RCLM (DAY only) or RL	NIL (DAY only)
A	250m	400m	500m
B			
C	300m	400m	500m
D			

STRAIGHT-IN RWY		A	B	C	D
01	ILS	532' (200')	532' (200')	532' (200')	532' (200')
	<i>ALS out</i>	R800m R1000m	R800m R1000m	R800m R1000m	R800m R1000m
	LOC	NOT AUTHORIZED	NOT AUTHORIZED	NOT AUTHORIZED	NOT AUTHORIZED
2 NDB		710' (378')	710' (378')	710' (378')	710' (378')
	<i>ALS out</i>	R1300m R1500m	R1400m R1500m	R1600m R1800m	R1800m R2000m
19	ILS	510' (200')	510' (200')	510' (200')	510' (200')
	<i>ALS out</i>	R800m R1000m	R800m R1000m	R800m R1000m	R800m R1000m
	LOC	NOT AUTHORIZED	NOT AUTHORIZED	NOT AUTHORIZED	NOT AUTHORIZED
2 NDB		720' (410')	720' (410')	720' (410')	720' (410')
	<i>ALS out</i>	R1300m R1500m	R1400m R1500m	R1600m R1800m	R1800m R2000m

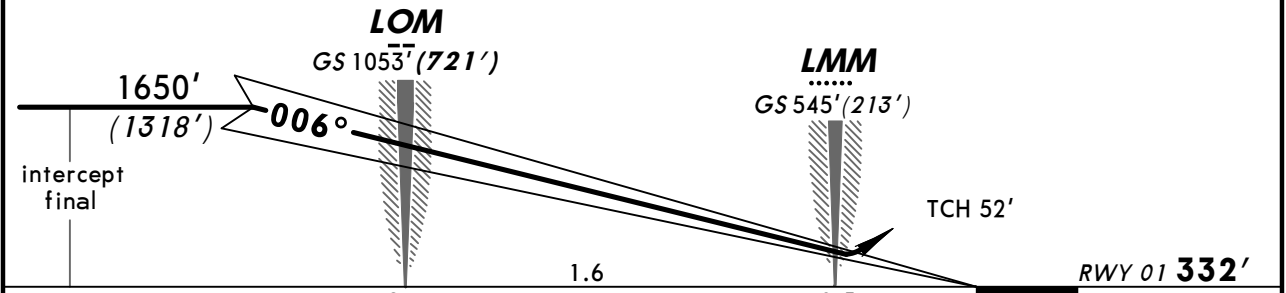
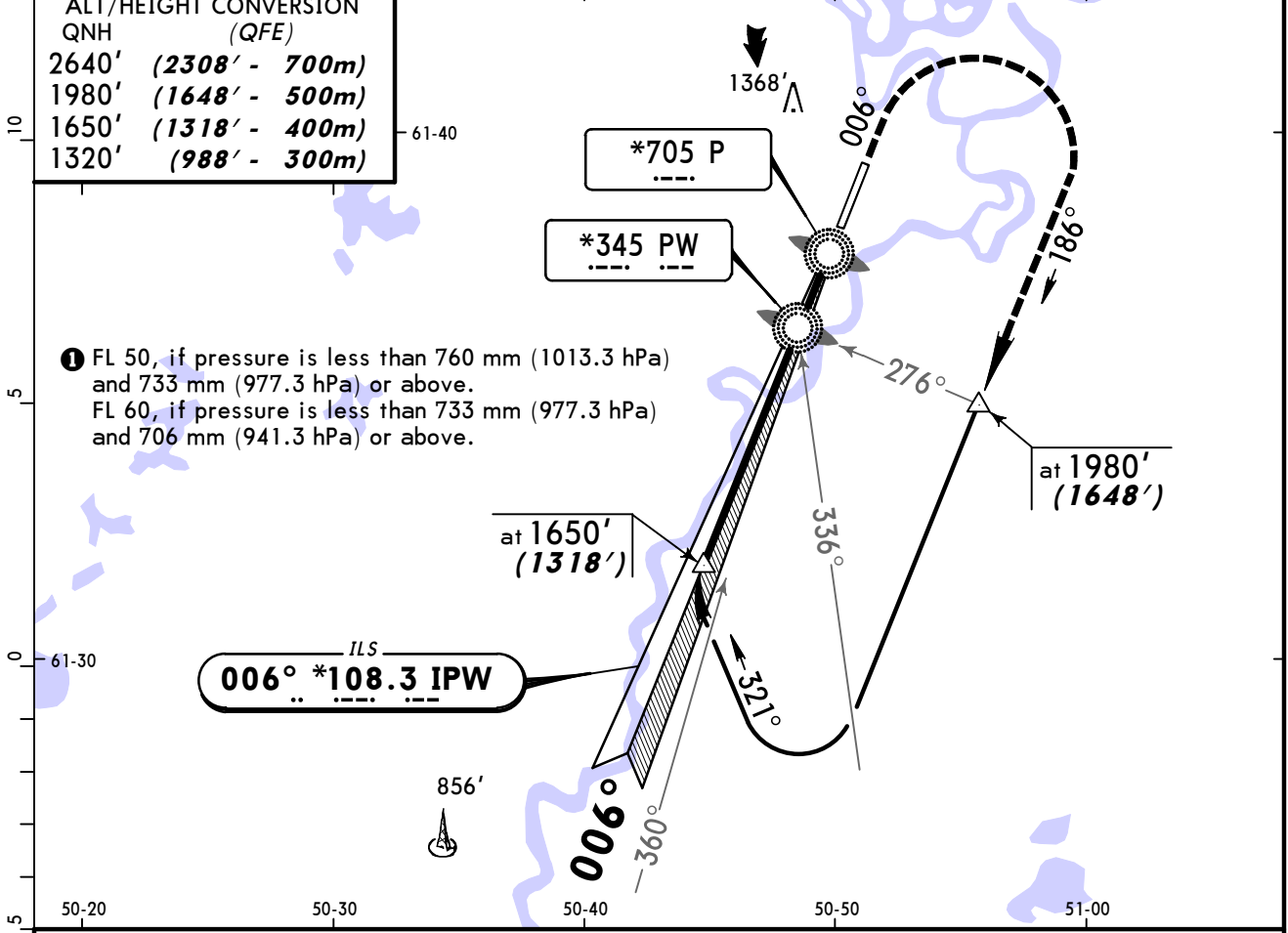
TAKE-OFF RWY 01, 19

LVP must be in Force			
	RCLM (DAY only) or RL	RCLM (DAY only) or RL	NIL (DAY only)
A			
B	250m	400m	500m
C			
D	300m		

ATIS 126.6		*SIVKAR Krug (TWR) 124.6		*SIVKAR Start (TWR) 124.6		<p>MSA ARP</p>
LOC IPW *108.3	Final Apch Crs 006°	GS LOM 1053' (721')	ILS DA(H) 532' (200')	Apt Elev 339' RWY 332'		
<p>MISSED APCH: Climb on 006° to 1320' (988'), then turn RIGHT onto 186° climbing to 1980' (1648'), then according to chart, or as directed.</p>						

Alt Set: MM (hPa on req) QNH on req (QFE) Trans level: FL 40 ① Trans alt: 2640' (2308')

ALT/HEIGHT CONVERSION	
QNH	(QFE)
2640'	(2308' - 700m)
1980'	(1648' - 500m)
1650'	(1318' - 400m)
1320'	(988' - 300m)

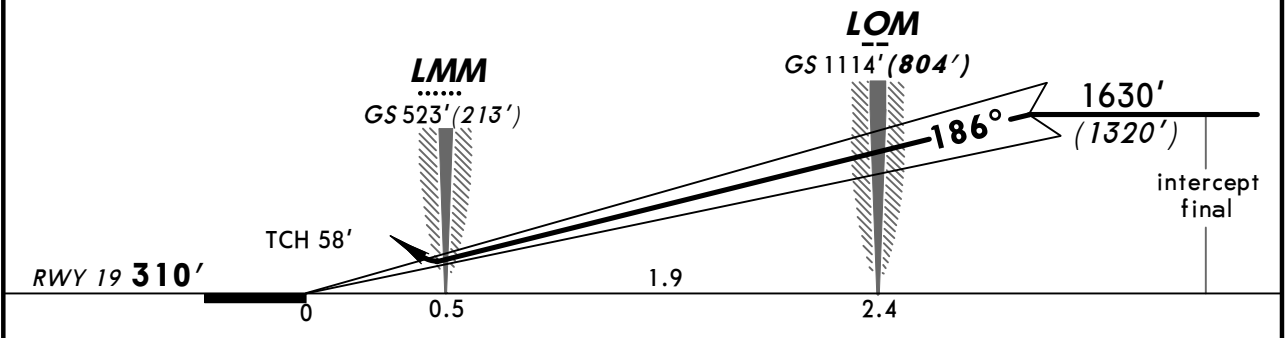
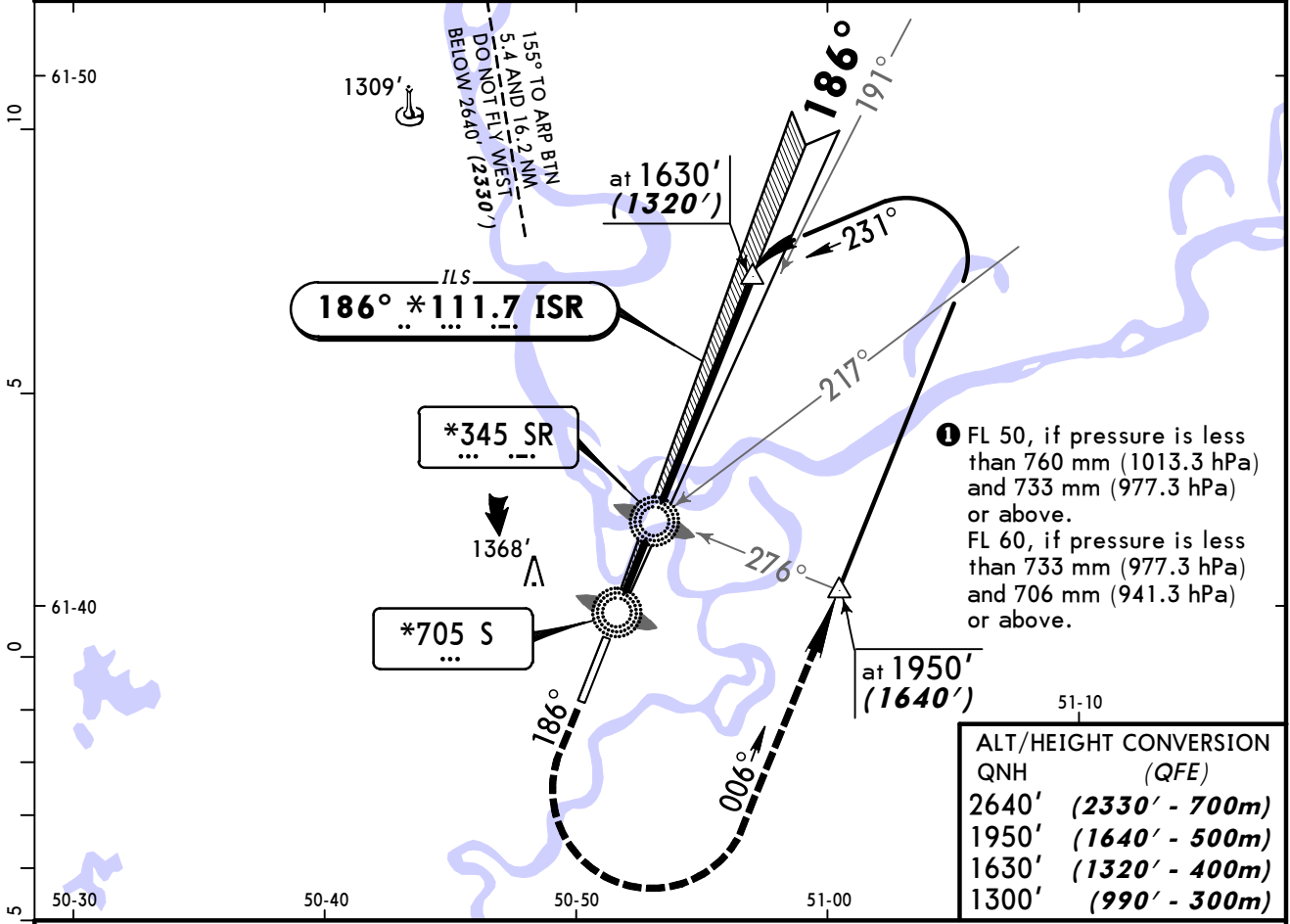


Gnd speed-Kts	70	90	100	120	140	160	ALS ⋮ ⋮	1320' (988') on 006°	186° RT	1980' (1648')
GS	3.00°	377	485	539	647	755				

STRAIGHT-IN LANDING RWY 01	
ILS DA(H) 532' (200')	LOC (GS out)
FULL	ALS out
A	NOT AUTHORIZED
B	
C	
D	
1200m	

PANS OPS

ATIS 126.6		*SIVKAR Krug (TWR) 124.6		*SIVKAR Start (TWR) 124.6		<p>MSA ARP</p>
LOC ISR *111.7	Final Apch Crs 186°	GS LOM 1114' (804')	ILS DA(H) 510' (200')	Apt Elev 339' RWY 310'		
<p>MISSED APCH: Climb on 186° to 1300' (990'), then turn LEFT onto 006° climbing to 1950' (1640'), then according to chart, or as directed.</p>						
Alt Set: MM (hPa on req)		QNH on req (QFE)		Trans level: FL 40 ①		Trans alt: 2640' (2330')



Gnd speed-Kts	70	90	100	120	140	160	ALS	1300' (990') on 186°	006° LT	1950' (1640')
GS	3.00°	377	485	539	647	755				

STRAIGHT-IN LANDING RWY 19		LOC (GS out)	
ILS DA(H) 510' (200')			
FULL	ALS out		
A			
B			
C	1200m	NOT AUTHORIZED	
D			

PANS OPS

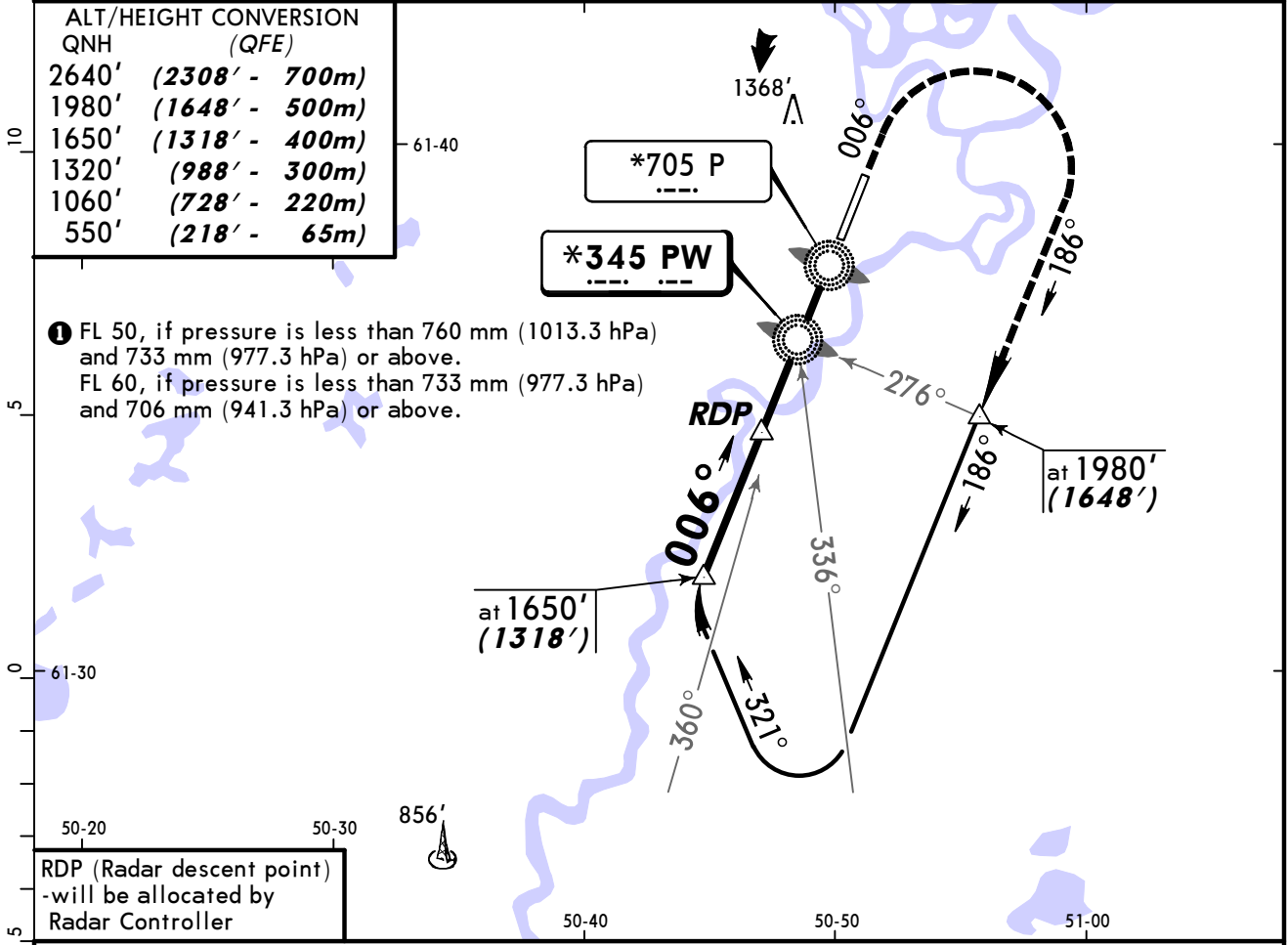
ATIS 126.6		*SIVKAR Krug (TWR) 124.6		*SIVKAR Start (TWR) 124.6		<p>MSA ARP</p>
NDB PW *345	Final Apch Crs 006°	Minimum Alt RDP 1650' (1318')	MDA(H) 710' (378')	Apt Elev 339'	RWY 332'	
<p>MISSED APCH: Climb on 006° to 1320' (988'), then turn RIGHT onto 186° climbing to 1980' (1648'), then according to chart, or as directed.</p>						

Alt Set: MM (hPa on req) QNH on req (QFE) Trans level: FL 40 ① Trans alt: 2640' (2308')

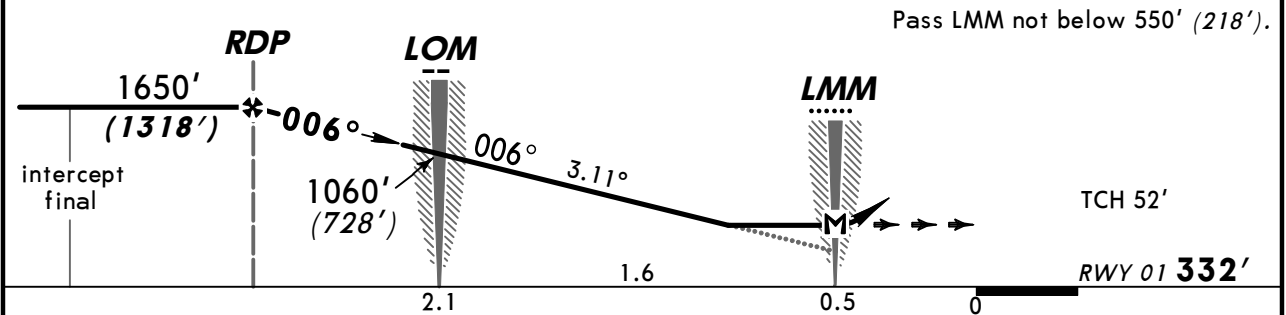
ALT/HEIGHT CONVERSION
QNH (QFE)

2640'	(2308' - 700m)
1980'	(1648' - 500m)
1650'	(1318' - 400m)
1320'	(988' - 300m)
1060'	(728' - 220m)
550'	(218' - 65m)

① FL 50, if pressure is less than 760 mm (1013.3 hPa) and 733 mm (977.3 hPa) or above.
FL 60, if pressure is less than 733 mm (977.3 hPa) and 706 mm (941.3 hPa) or above.



RDP (Radar descent point) - will be allocated by Radar Controller



Gnd speed-Kts	70	90	100	120	140	160	ALS ⋮ ⋮ ⋮	1320' (988') on 006°	186° RT	1980' (1648')	
Descent angle	3.11°	385	495	550	660	770		880			
MAP at LMM											

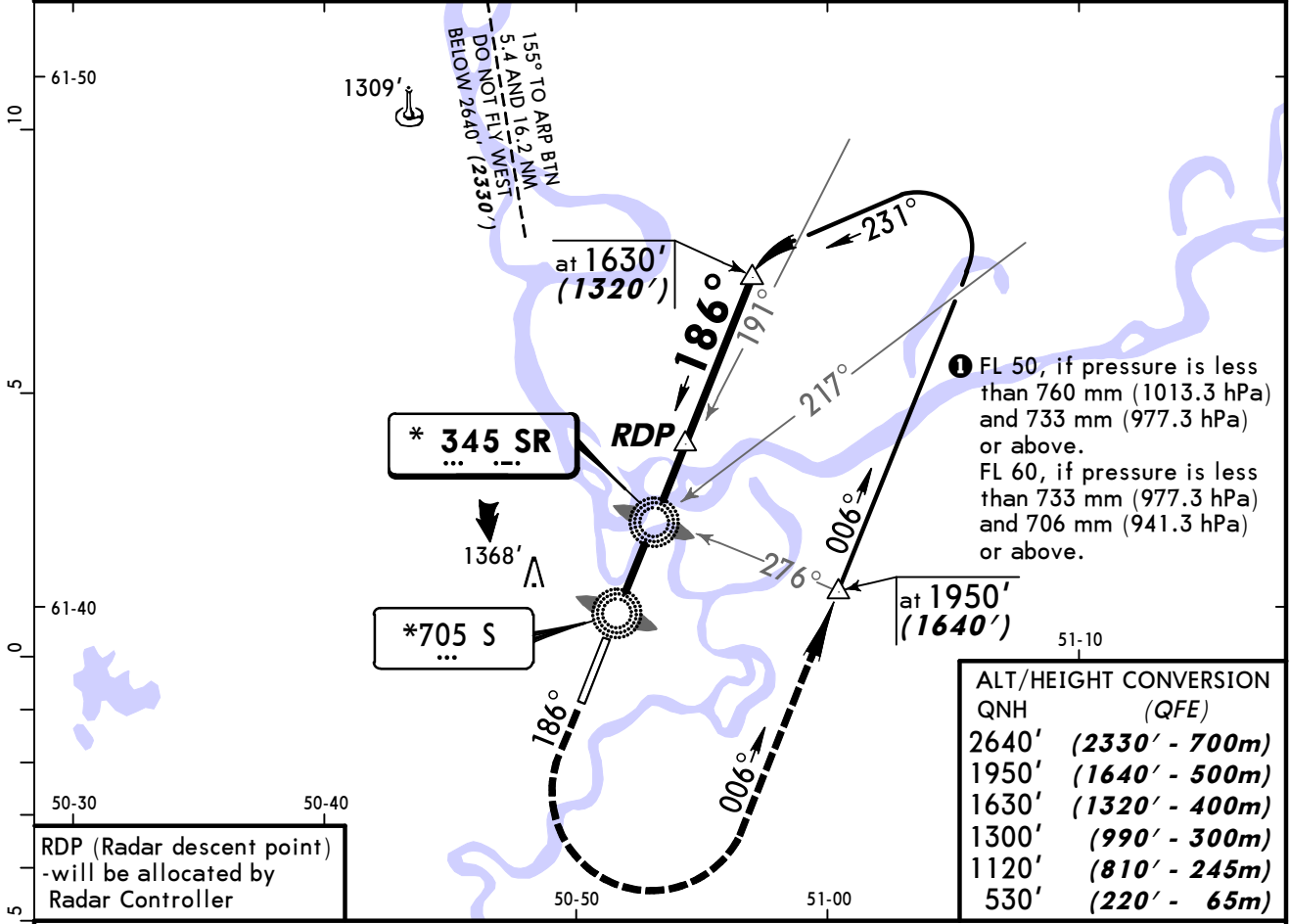
STRAIGHT-IN LANDING RWY 01

MDA(H) 710' (378')

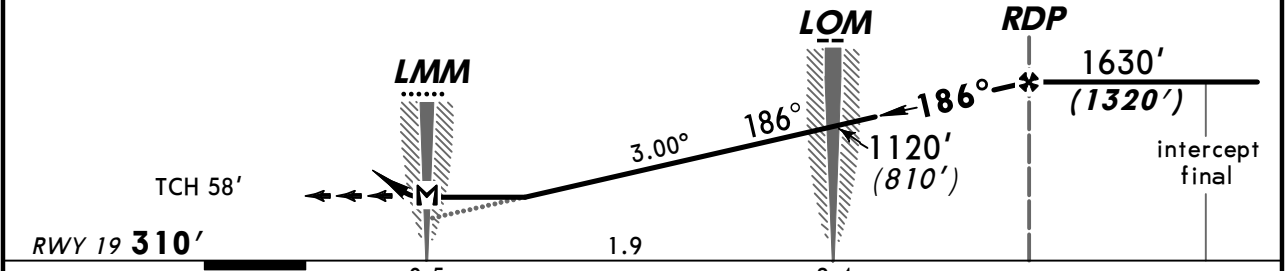
ALS out

A						
B						
C		1900m				
D		2000m				

ATIS 126.6		*SIVKAR Krug (TWR) 124.6		*SIVKAR Start (TWR) 124.6		<p>MSA ARP</p>
NDB SR *345	Final Apch Crs 186°	Minimum Alt RDP 1630' (1320')	MDA(H) 720' (410')	Apt Elev 339' RWY 310'		
<p>MISSED APCH: Climb on 186° to 1300' (990'), then turn LEFT onto 006° climbing to 1950' (1640'), then according to chart, or as directed.</p>						
Alt Set: MM (hPa on req)		QNH on req (QFE)		Trans level: FL 40 ①		Trans alt: 2640' (2330')



Pass LMM not below 530' (220').



Gnd speed-Kts	70	90	100	120	140	160	ALS PAPI	1300' (990') on	186°	006°	1950' (1640')
Descent angle	3.00°	372	478	531	637	743		849	↑	←	↑
MAP at LMM											

STRAIGHT-IN LANDING RWY 19

MDA(H) 720' (410')

ALS out

A	2100m
B	
C	
D	

Chart changes since cycle 05-2012

ADD = added chart, REV = revised chart, DEL = deleted chart.

ACT	PROCEDURE IDENT	INDEX	REV DATE	EFF DATE
-----	-----------------	-------	----------	----------

SYKTYVKAR, (SYKTYVKAR - UUY)

TERMINAL CHART CHANGE NOTICES

No Chart Change Notices for Airport UUYU

Chart Change Notices for Country RUS

Type: Gen Tmnl

Effectivity: Temporary

Begin Date: Immediately

End Date: Until Further Notice

The Russian CAA provided major changes for the AIRAC cycle effective 17 November 2011, including implementation of RVSM separation techniques and ICAO flight level system, airspace alignment and change of the existing coordinates standard to PZ-90.02. Also affected by the change are the countries of Afghanistan, Kazakhstan, Kyrgyzstan, Mongolia, Tajikistan, Turkmenistan, and Uzbekistan. We have also received late sources effective 17 November 2011. Please continue to refer to the notices published for the individual airports and our website. www.jepesen.com/eurasiachange.